

22" Centric GB Display

Electrical Description

Display Characteristics:

Type: 22.0" Active Matrix TFT
Dot Number: 1680 x 1050 Pixels
Dot Pitch: 0.297mm
Active Display Area: 473.76 mm x 296.1 mm
Response Time: 5ms Average— Typical
Contrast Ratio: 1000:1 Typical
Brightness/Light Intensity: 300 cd/m² (Nits) - Typical
Viewing Angles L/R/U/D: 75°/75°/60°/50°
Backlight Life: 50,000 Hours- Typical
Colour Depth: 16.7 Million (Depending on Graphics Card)

Dimming:

Range: 0-100% (Dimming Ratio 1000:1)

DVI-I Input:

Digital Interface: DVI 1.0 Compatible Interface
85Hz Operation

VGA Input:

Analog: RGB 0.7-1.0V p-p
Impedance: 75 Ohms
Sync. Type/Level: Sync-on-Green (-ve) 0.3V

Synchronisation Range:

Horizontal Scan: 15-100 kHz
Vertical Scan: 30-100 Hz

Resolutions:

VESA Support for: 1280 x 1024 SXGA
1024 x 768 XGA*
800 x 600 SVGA
640 x 480 VGA
**Recommended for optimised resolution*

Composite Video Input:

Composite Interface: PAL, NTSC, SECAM

Input Voltage:

AC (Auto-Ranging) Input: 115/230V AC +/- 10%

Power Consumption:

AC Supply: 60W

Environmental:

**Operating Temp: -15 to +55°C (IEC 60945)
Storage Temp: -20 to +70°C
Operating Humidity: 30% to 90% (Non-Condensing)
Storage Humidity: 10% to 90% (Non-Condensing)
Vibration: +/-1mm, 2 to 13Hz:0.7g 13 to 100Hz

**We DO NOT recommend routine operation @ extreme temperatures.*

Mechanical Description

Construction:

Finish: Front Bezel - Bonded Glass
Rear Housing - Modular Metal
Housing: Chemically Treated Metal
Front Sealing: Front Bezel IP67
Protective Safety Glass: Conturan Hardend, Laminated & Anti-glare Coated
Ventilation: Convection (With Fans)

Dimensions:

Display for Flush Mounting (mm): 20.89" (531) H x 14.02" (356) W
X 3.11" (79) D
Panel Cut-out (mm): 20.38" (518) H x 13.50" (343) W

Weight:

Weight (kg): 21.85 lbs (9.9)

Connections:

DVI Signal: DVI-I Female
VGA Signal: 15-pin Female D-SUB
Composite Signal: RCA Female Jack
S-Video: S-Video Socket
Remote Keypad Interface: 25-pin Female D-SUB
RS232 Control: 9-pin Female D-SUB
AC Power: IEC Inlet

Menu Controls:

Remote Membrane Keypad with Buttons for; Menu and Power. Back-
Brightness Knob: light Bright Potentiometer & AC LED.
Backlight Brightness: Remote Panel Knob (Potentiometer)

Shipping:

Carton Size (cm): 23" (58.4) x 22" (55.8) x 11" (27.9)
Weight (kg): 34 lbs (15)

Approvals / Warranty

Compliance:

Maritime / Military: IEC 60945 4th Edition. IEC 61174 (ECDIS), IEC 60936 (RADAR) & IEC 60529 (IP). MIL-STD-810F & MIL-STD-901D. IACS e10 (to obtain ABS, BV, CCS, GL, KR,LR, NK, RINA, RS).

Time Approvals:

ABS—Pending

Limited Warranty:

2 Year

Ordering Codes

22" Centric GB Display: 23-2210-GB

Canadian Headquarters: **Nauticomp Inc.**
8 Callaghan Road
Lindsay, Ontario,
Canada, K9V 4R4.
p: +1 705-328-2992
f: +1 705-328-2990

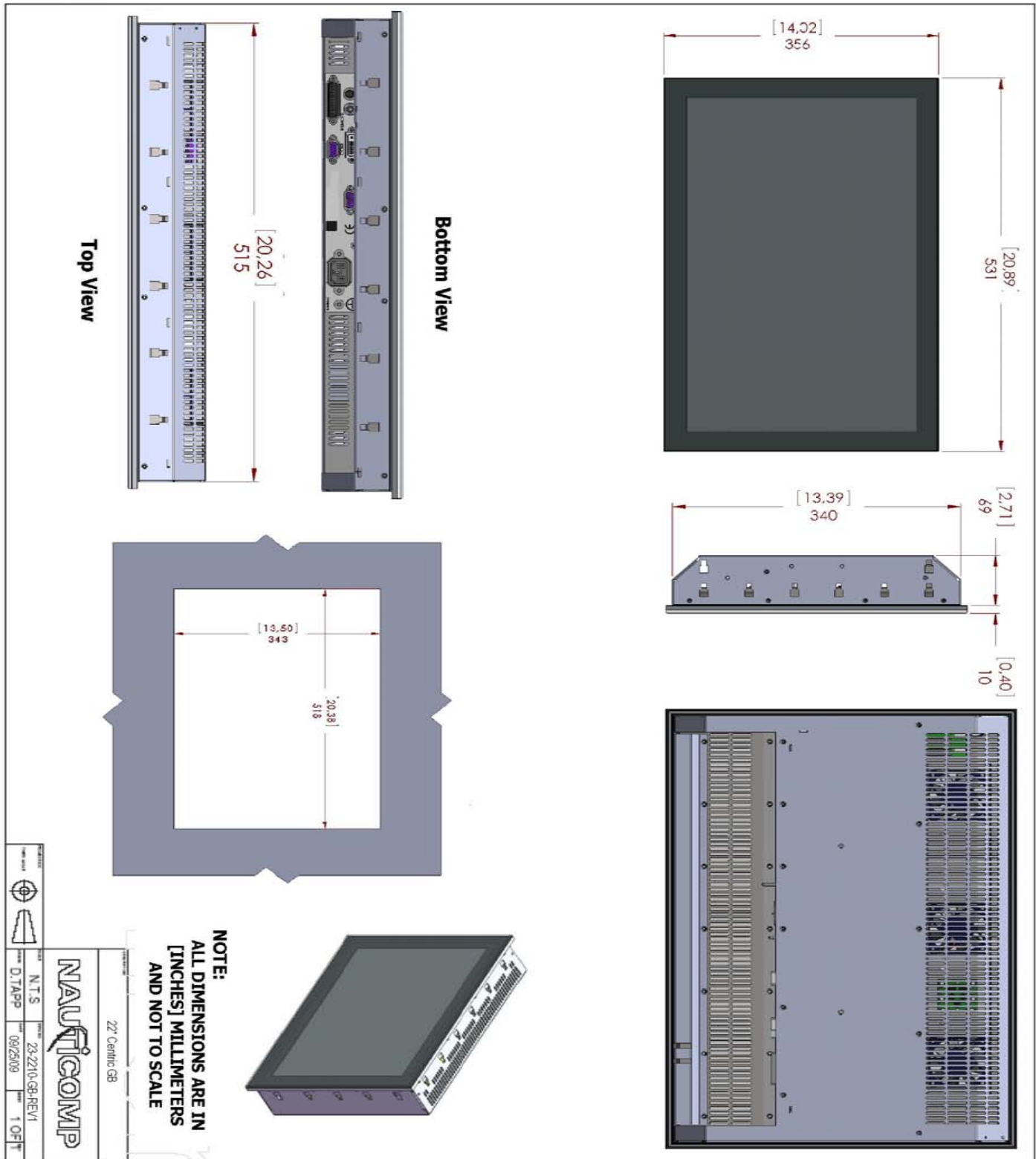
United Kingdom: **Nauticomp European Distribution**
CA Clase
2 Mornington Place, Waterberry Drive,
Waterlooville, Hants, PO7 7XX
p: +44 2392 247920
f: +44 2392 261959

United States: **Nauticomp International**
1200 NE 7th Avenue
Fort Lauderdale, Florida
United States 33304.
p: +1 954 235 4875
f: +1 705-328-2990

URL: www.nauticomp.com E-Mail: sales@nauticomp.com

Measurements—Display

Note: All dimensions are in mm and (inch)



Canadian Headquarters:
Nauticomp Inc.
 8 Callaghan Road
 Lindsay, Ontario,
 Canada, K9V 4R4.
 p: +1 705-328-2992
 f: +1 705-328-2990

United Kingdom:
Nauticomp European Distribution
 CA Clase
 2 Mornington Place, Waterberry Drive,
 Waterlooville, Hants, PO7 7XX
 p: +44 2392 247920
 f: +44 2392 261959

United States:
Nauticomp International
 1200 NE 7th Avenue
 Fort Lauderdale, Florida
 United States 33304.
 p: +1 954 235 4875
 f: +1 705-328-2990

URL: www.nauticomp.com E-Mail: sales@nauticomp.com