

GENESIS SERIES

A COMPLETE LINE OF DISPLAYS DESIGNED AROUND MARINE AND MILITARY

The Genesis Series displays provide an economical, rugged solution for both Marine and Military applications.

PRODUCT FEATURES

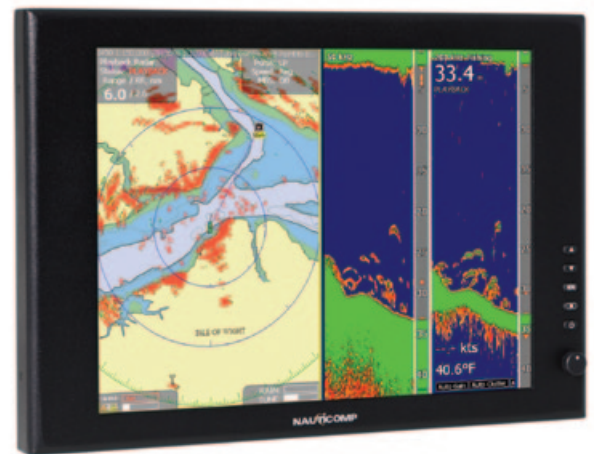
- Sunlight Readable - Ready for all environments
- Waterproof - Built to Stringent IP67 Standards
- Bonded Glass - Optically Enhanced for clarity
- Multiple Inputs - DVI & VGA
- Deep Dimming - 0 to 100% via "Potentiometer"
- Superior Image - Scalable resolution up to SXGA
- Extended Temperature Range on 15" model

DEDICATED MARINE DISPLAYS

The new cost effective Genesis Series has arrived. With highly efficient LED Backlight Technology, 2 inputs, 1 DVI & 1 VGA, our 15" and 19" displays combine today's cutting edge technology with ease of use. This product includes our famous dim to red technology, with a slim case design so today's user can put a larger display into a smaller space.

www.nauticomp.com

Genesis SERIES



Nauticomp Inc.
 8 Callaghan Road
 Lindsay, Ontario
 Canada K9V 4R4
 p: +1.705.328.2992
 f: +1.705.328.2990

*ISO 9001:2000
 Certified Corporate Offices

Nauticomp International
 1200 Northeast 7th Ave
 Suite #4
 Fort Lauderdale,
 Florida, 33304
 Tel: +1 954 235 4875
 Fax: +1 705 328 2990





+ Available with *Touch Screen Technology

Specifications	15" LED	19" LED
Order Model Part #	24-1510LED	24-1910LED
Backlight Brightness	750 cd/m2 (nits)	750 cd/m2 (nits)
Backlight (full power)	Approx. 50,000 hrs.	Approx. 50,000 hrs.
Dimming Circuit	Full Brightness To Black (User selectable Red on any input)	Full Brightness To Black (User selectable Red on any input)
Menu Controls	Front Mount	Front Mount
Glass Enhancement	Antiglare Bonded Glass	Antiglare Bonded Glass
Display Size	15.0" Diagonal	19.0" Diagonal
Display Type	Enhanced - Sunlight Readable TFT LCD	Enhanced - Sunlight Readable TFT LCD
Exterior Dimensions (in)	15.375 W x 10.906 H x 3.25 D	17.813 W x 13.625 H x 3.25 D
Exterior Dimensions (mm)	390.53 W x 277.01 H x 82.55 D	452.44 W x 346.08 H x 82.55 D
Operating Temperature F	(-4) - 158 degrees F	32 - 131 degrees F
Operating Temperature C	(-20) - +70 degrees C	0 - 55 degrees C
Display Cutout Size (in)	13.75 W x 9.813 H	16.125 W x 12.438 H
Display Cutout Size (mm)	349.25 W x 249.25 H	409.58 W x 315.92 H
Display Actual Weight	9 lbs. (4.1 kg.)	14 lbs. (6.4 kg.)
Display Input Voltage	12.1V DC @ 1.5A (18W)	12.1V DC @ 3.8A (46W)
Native Resolution	1024 x 768 / XGA	1280 x 1024 / SXGA
Display Inputs	1 x DVI-D, 1 x VGA	1 x DVI-D, 1 x VGA
Marine Compliance	NEMA 6/IP67	NEMA 6/IP67
Video Standard	DVI-D, RGB (VGA, SVGA, XGA, SXGA)	DVI-D, RGB (VGA, SVGA, XGA, SXGA)
Power Options	AC or DC	AC or DC
Optional Touch Screen	Touch Screen (31-1510TC)	Touch Screen (31-1910TC)
Mounting Style	Surface / Pedestal	Surface/Pedestal
Mounting Alternative	Rear Mounting Ring	Rear Mounting Ring
Chassis Enclosure	Preformed Aluminum	Preformed Aluminum
Chassis Finish	Black Powder Coated	Black Powder Coated
Limited Warranty	2 Year	2 Year

NOTES: