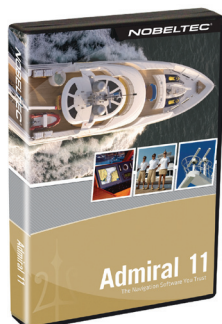




ADMIRAL™ 11



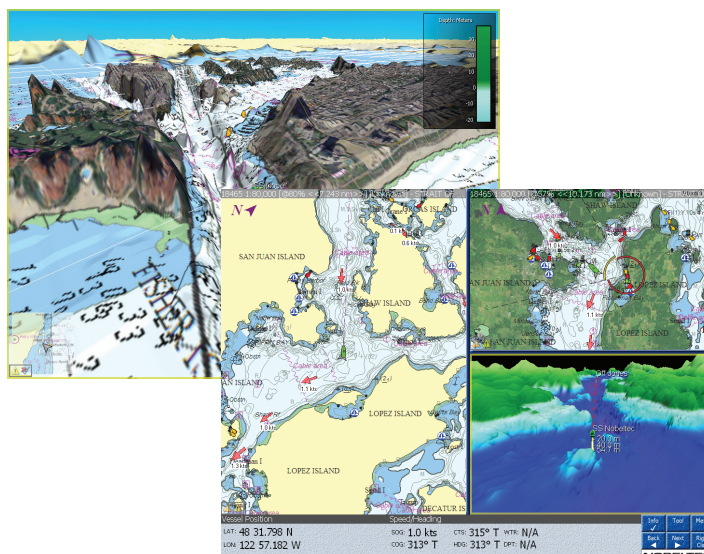
Your yacht deserves nothing less than the most powerful electronic navigation solution available Admiral™ 11. With more features and user options than VNS™ and better functionality than any other software on the market, Admiral delivers a comprehensive, feature-rich navigation solution that is unmatched in quality. New features in Admiral 11 include extensive new sensor and system integration options, NMEA 2000 integration, and a host of new software features and service offerings that provide mariners with quality, power, performance and unmatched display options.

Features

- Exclusive NavView interface with multi-monitor support
- Dual and enhanced radar support
- GlassBridge™ Network and Data Sharing
- Enhanced target tracking (ARPA/MARPA, DSC, AIS, Tender)
- Support for up to four video cameras
- Track Line coloring
- Customizable vessel sizing
- GRIB weather support with complimentary Nobeltec Weather Service, including Sea Surface Temperature
- Integrated ETA calculator
- NMEA 0183 and NMEA 2000 integration
- Fuel Flow (4 meters) and Fuel Tank (4 meters) monitoring with estimated maximum range
- Seamless chart quilting and rotation options with real time vessel tracking
- 3D view with Shaded Relief
- Distance and Bearing to active mark/route/target
- Unlimited route and waypoint placement
- Autopilot ready
- Daylight, Twilight and Night display modes
- Powerful Place and Name search
- Undo/Redo feature
- Furuno FA-30, FA-50 NavNet 1, NavNet vx2 and NavNet 3D direct network integration
- Nobeltec Tides & Currents software included
- FREE Complete NOAA Raster Chart Library

Minimum System Requirements

- Windows® 7 (32 or 64-bit), XP Pro or Vista
- 1 GHz CPU / 1 GB RAM (Dual Core/Dual Processor is supported, 2GHz or faster CPU / 2 GB or more RAM is recommended)
- DVD Drive req. and 20 GB Hard Disk available
- 1024x768 resolution monitor, 64 MB RAM video card (256 MB RAM video card and OpenGL for each monitor is recommended)
- USB ports for Hardware Key and connected instruments, ex. GPS, NMEA 2000 PC Gateway, etc.
- Ethernet port required for InSight Radar and Furuno NavNet integration



GPS Upload / Download of Waypoints

- All units that support NMEA 0183 data transfer format: Lowrance, Furuno, Garmin, Magellan, Navman, Northstar, Raymarine, Standard Horizon

Supported Chart Formats

- C-Map by Jeppesen Max Pro Charts
- Raster charts (MapMedia, BSB, Softcharts, Maptech, Maptech Photos)

NOBELTEC®

Call or visit our website for sales, technical support, and technical specifications.

Toll-Free: 800.946.2877

Global: +1 503.579.1414

Europe/Middle East/Africa: +33 5 59 43 81 04

Website: www.nobeltec.com

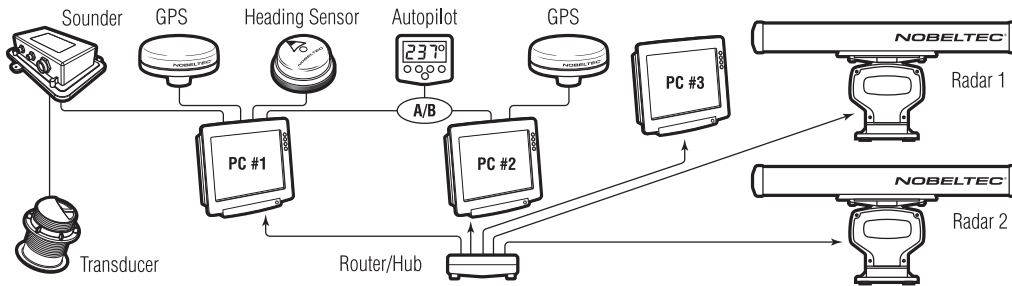
© 2011 Nobeltec, Inc. All rights reserved. 01/2011

Please Note: VNS 11 and Admiral 11 software only work with Raster Charts and C-MAP® by Jeppesen® MAX Pro™ charts. This version of software does not work with Passport™ charts.



ADMIRAL™ 11

Admiral GlassBridge® Network



Admiral™ 11 and VNS™ 11 Feature Comparison Chart

Features	VNS	Admiral
Microsoft® Windows 7 (32 and 64-bit), Vista, and XP support	X	X
Undo/Redo feature	X	X
GPS satellite strength/trip odometer NavBar	X	X
Customizable NavInfo panels		X
NavView interface with menu auto hide		X
Hand panning tool	X	X
Includes North American tides and currents (predictions until 2100)	X	X
ETA calculator integrating tides	X	X
Route Wizard	X	X
Planbook	X	X
C-Map™ by Jeppesen® Max Pro™ Cartography support	X	X
Raster Chart support including free NOAA Raster Chart Library	X	X
NMEA 0183 and NMEA 2000 integration	X	X
Fuel Flow and Fuel Tank monitoring with estimated maximum range	2 meters	4 meters
Sailing Plus Pack™ support (with Windvantage™ Weather Router)	X	X
Bathy Recorder™ support	X	X
Tender Tracker Plus Pack™ support		X
Enhanced AIS Filtering		X
Track Line coloring		X
GlassBridge™ Network support		X
Multi-monitor support		X
Customizable vessel sizing		X
InSight™ Radar support	X	X
Dual and enhanced InSight™ Radar support		X
ARPA Support for external radars and software-based MARPA target tracking		X
Weather Plus Pack™ (XM®WX Weather or Sirius® Marine) support	X	X
Nobeltec Weather Service (GRIB overlay with animation)	X	(Includes Sea Surface Temperature)
OCENS WeatherNet (Pre-Installed)		X
Video camera support	1	up to 4
Furuno FA-30, FA-50, NavNet 1, NavNet vx2 and NavNet 3D direct network integration	X	X