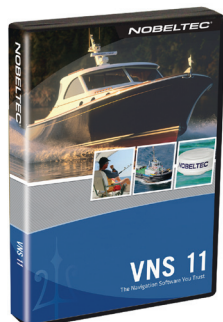




## VNS™ 11



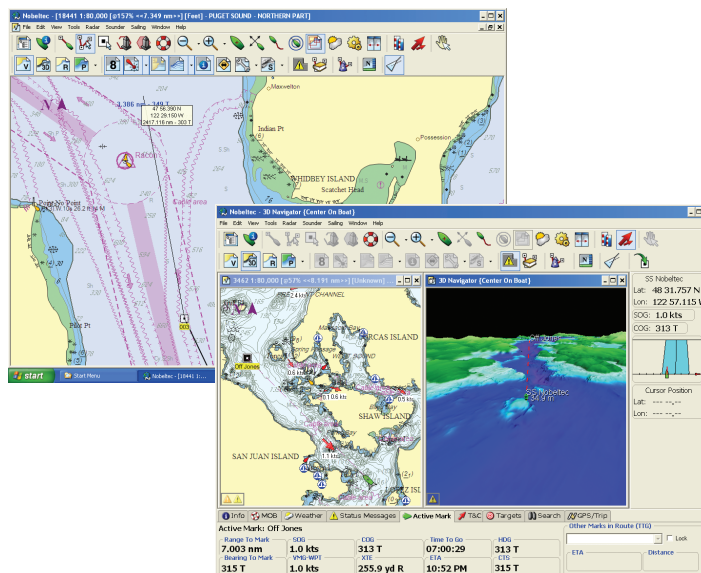
Nobeltec sets the standard for powerful yet simple navigation software with VNS™ 11 (Visual Navigation Suite). New features in VNS 11 include extensive new sensor and system integration options, NMEA 2000 integration, and a host of new software features and service offerings that provide mariners with quality, power, performance and unmatched display options. The result is the ultimate navigation software with breathtaking chart data and incomparable features.

### Features

- Seamless chart quilting and chart rotation options
- Integrated ETA calculator
- Single radar support
- NMEA 0183 and NMEA 2000 integration
- Fuel Flow (2 meters) and Fuel Tank level (2 meters) monitoring with estimated maximum range displays
- 3D view with Shaded Relief
- Unlimited route and waypoint placement
- Distance and Bearing to active mark/route/target
- Autopilot ready
- AIS target tracking
- Daylight, Twilight and Night display modes
- Support for one video input
- Powerful Place and Name search
- GRIB weather file support with complimentary Nobeltec Weather Service
- Undo/Redo feature
- Furuno FA-30, FA-50, NavNet 1, NavNet vx2 and NavNet 3D direct network integration
- Nobeltec Tides & Currents software included
- FREE complete NOAA Raster Chart Library

### Minimum System Requirements

- Windows® 7 (32 or 64-bit), XP Pro or Vista
- 1 GHz CPU / 1 GB RAM (Dual Core/Dual Processor is supported, 2GHz or faster CPU / 2 GB or more RAM is recommended)
- DVD Drive req. and 20 GB Hard Disk available
- 1024x768 resolution monitor, 64 MB RAM video card (256 MB RAM video card and OpenGL for each monitor is recommended)
- USB ports for Hardware Key and connected instruments, ex. GPS, NMEA 2000 PC Gateway, etc.
- Ethernet port required for InSight Radar and Furuno NavNet integration



### GPS Upload / Download of Waypoints

- All units that support NMEA 0183 data transfer format
- Lowrance, Furuno, Garmin, Magellan, Navman, Northstar, Raymarine, Standard Horizon

### Supported Chart Formats

- C-Map by Jeppesen Max Pro Charts
- Raster charts (MapMedia, BSB, Softcharts, Maptech, Maptech Photos)

## NOBELTEC®

Call or visit our website for sales, technical support, and technical specifications.

Toll-Free: 800.946.2877

Global: +1 503.579.1414

Europe/Middle East/Africa: +33 5 59 43 81 04

Website: [www.nobeltec.com](http://www.nobeltec.com)

Please Note: VNS 11 and Admiral 11 software only work with Raster Charts and C-MAP® by Jeppesen® MAX Pro® charts. This version of software does not work with Passport™ charts.

© 2011 Nobeltec, Inc. All rights reserved. 01/2011