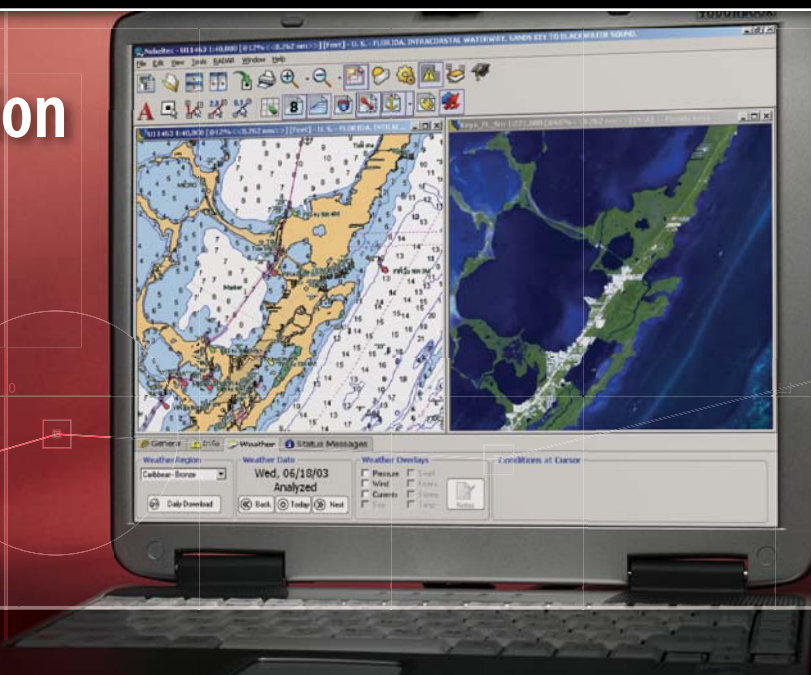


All The Navigation  
Data You Need  
In One Box



# Nobeltec® Passport *Deluxe*™

Passport Deluxe is the only electronic charting package that includes digitized versions of both vector and raster official NOAA charts, navigation photos and Passport Bathymetry Maps™ all in one box. These regions also include a copy of Nobeltec's eChart Planner™ software so you can plan routes with waypoints and then print them out for use onboard. In addition, Passport Deluxe comes with navigation data such as daily weather downloads, one year of tide and current predictions for all of North America, NOAA coast pilots, streets and roads and a World port index.

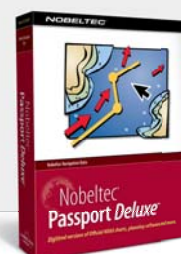
Each Passport Deluxe region contains a World Folio of vector charts on CD-ROM and includes a voucher good for a single coverage area that can be redeemed on the web or by telephone. All additional navigation data comes on a separate and included DVD(s).

Nobeltec Product	Part #
Passport Deluxe (One US Region)	NTDPX011
Passport Deluxe Canada (One Canadian Region - P1 Plus or P2 Plus)	NTDPX099
Passport Deluxe Bahamas (Region 9 - Covers Bahamas & Bermuda)	NTDPX041

For current pricing check [www.nobeltec.com](http://www.nobeltec.com)

**NOBELTEC®**

*Making Every Voyage Possible™*



## One Low Price Includes:

Passport World Charts

—

Photo, Topo and RasterPlus Charts

—

Passport Bathymetry Maps

—

One Year of Tides & Currents

—

Streets and Roads

—

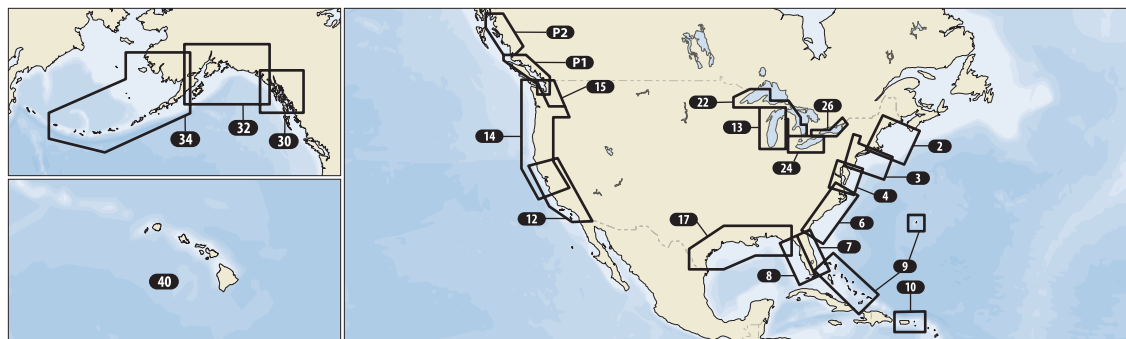
Ports and Services Database

—

eChart Planner Software

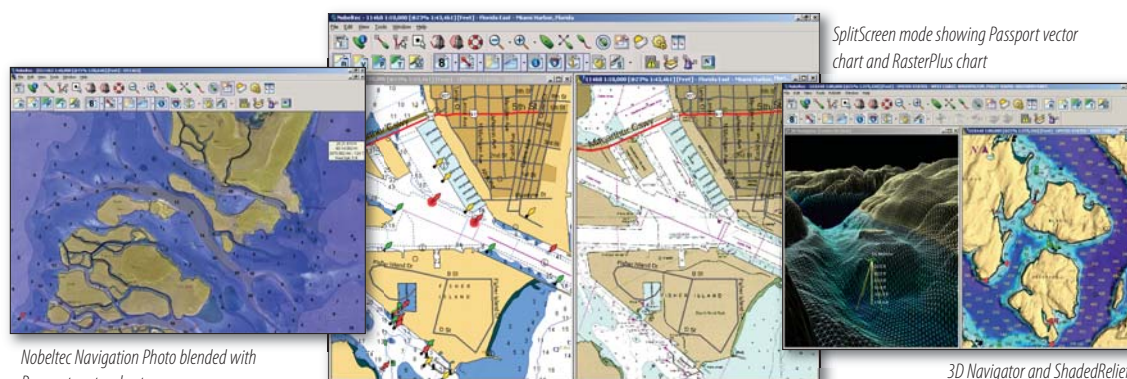
# Passport Deluxe™

## Specifications



Region	Region Name	Region	Region Name	Region	Region Name
2	Block Island, RI to Canadian Border	13	Lake Michigan	32	South Central Alaska: Yakutat to Kodiak
3	New York to Nantucket to Cape May, NJ	14	San Francisco to Cape Flattery	34	Alaska: Aleutians and Bristol Bay
4	Chesapeake and Delaware Bays	15	Pacific NW: Puget Sound to Canadian Border	40	Hawaiian Islands
6	ICW: Norfolk, VA to Jacksonville, FL	17	Gulf Coast: Mobile, AL to Mexican Border	<b>Passport Deluxe Canada</b>	
7	Florida East Coast and the Keys	22	Lake Superior and Lake Huron (US Waters Only)	P1 Plus	Inside Passage of Vancouver Island
8	Florida West Coast and the Keys	24	Lake Erie (US Waters Only)	P2 Plus	Queen Charlotte Sound: Hecate Strait to Portland Canal
10	Puerto Rico and U.S. Virgin Islands	26	Lake Ontario (US Waters Only)	<b>Passport Deluxe Bahamas</b>	
12	Pt. Arena to the Mexican Border	30	Southeast Alaska	9	Bahamas and Bermuda

Loaded with navigation data, Passport Deluxe is the only electronic charting package available that includes vector, raster, 3D bathymetric maps, navigation photos and topo maps\* all for one low price. When used with Nobeltec navigation software, Passport Deluxe regions provide you with all the information you need for safe and easy navigation.



Nobeltec Navigation Photo blended with  
Passport vector charts

SplitScreen mode showing Passport vector  
chart and RasterPlus chart

3D Navigator and ShadedRelief

## Passport Charts (Vector)

### Depth Soundings

Customize your soundings by choosing your own font and type size. Display as meters, fathoms or feet and change sounding colors based upon depths.

### Chart Layering

Passport Charts allow you to turn data layers on and off with a single mouse click, enabling you to view only the most pertinent chart information.

### Chart Coloring

Easily select chart colors from a variety of color palettes that will enable you to view your charts in any lighting conditions.

\*Topo map CD's may be sent when you redeem the voucher.

## Passport Bathy Maps (3D)\*\*

### 3D Navigator™

Use Passport Bathy Maps to view the ocean floor in full three-dimensional color. This provides you with an alternative view of what's around vessel.

### ShadedRelief™

Use Passport Bathy Maps to create a shaded relief view of your two-dimensional Passport Charts. Quickly identify your surroundings and depth of the water.

### Depth Contours

Using the bathymetric data included in Passport Deluxe, Nobeltec Navigation Software can create customized near-land depth contour lines.

\*\* Requires Visual Navigation Suite or Admiral to view Passport Bathy Maps as a 3D grid.

## Data Support

- Passport Deluxe Regions are supported by Nobeltec software versions 6.0 and later. If you are using version 6.0, you will need to install the 6.5 Feature Pack which can be found on the World Folio CD. Nobeltec eChart Planner software is included inside for planning purposes.

## GPS Upload/Download\*

- All units that support NMEA 0183
- Eagle/Lowrance®
- Furuno® Models
- Garmin® Models
- Leica® MX Series
- Magellan® Models
- Micrologic® Models
- Northstar® 941/951
- Raytheon®/Raymarine® Models
- Standard Horizon®
- Trimble® NT Series

\* Not all models from the companies indicated above support data transfers. Upload/download support is an optional add-on which must be purchased separately from the eChart Catalog from within eChart Planner.

## Minimum System Requirements

- Microsoft® Windows® 98 SE/2000/XP  
(Recommended: Microsoft® Windows 2000/XP Pro)
- Pentium® III 450 MHz or equivalent  
(Recommended: Pentium® IV class 1.0 GHz)
- 128 MB RAM - 256 MB or more for XP  
(Recommended: 256 MB)
- 50 MB available hard disk space  
(additional space required for charts or other data)
- 16 bit color VGA-compatible display with minimum 800 x 600 resolution settings  
(Recommended: 1024 x 768 resolution)
- DVD-ROM drive  
(CD drive if only using Passport vector charts)
- Mouse or other pointing device
- Internet access required for registration and to purchase software add-ons and charts

For more information visit your local authorized Nobeltec reseller or visit us on the web at [www.nobeltec.com](http://www.nobeltec.com).

Nobeltec is constantly enhancing product specifications and accessories. To find the most up-to-date information, please visit our website. Specifications subject to change without notice. Trademarks are property of their respective owners. ©2003-2004 Nobeltec Corporation. All rights reserved.

NTCUT000 6/04

**NOBELTEC®**

a JEPPESEN company

15160 NW Laidlaw Rd., Suite 100 • Portland, Oregon 97229

Phone: 503-579-1414 • Toll Free: 800-946-2877

Web: [www.nobeltec.com](http://www.nobeltec.com)