



TimeZero

TRIDENT™

THE NAVIGATION SOLUTIONS YOU TRUST

NOBELTEC®



Introducing Nobeltec *TimeZero* **TRIDENT** FEATURING STATE-OF-THE ART TIMEZERO CHART ENGINE

Nobeltec *TimeZero* **TRIDENT** offers a completely new, innovative user interface which has been designed to be extremely intuitive and easy to use

TimeZero **TRIDENT** Key Features

- TimeZero Chart Engine
- Includes free NOAA raster & vector charts, and 3D data for US waters. Vector chart coverage subject to available NOAA ENC.
- Free high resolution satellite photos for the US are available
- Supports multiple types of chart sources
- Selected Furuno Radar, MFD, and Sounder integration (NavNet 3D, FAR2XX7 and Ethernet Sounders)
- Nobeltec InSight (Ethernet) Radar integration
- No Dongle needed to secure the software or the charts
- Excellent technical support from the Nobeltec team

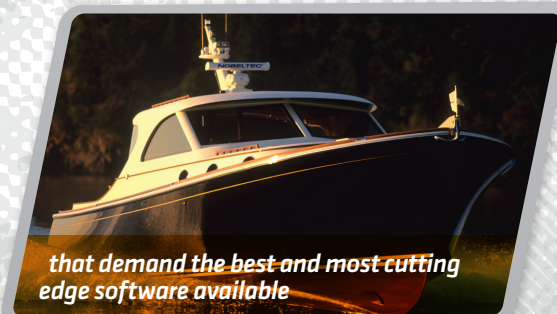
Choose from Multiple Chart Sources

Wherever you want to go, you are sure to find a MM3D chart to suit your needs

- MM3D raster charts sourced from local hydrographic offices
- Official S-57 vector charts in MM3D from selected hydrographic offices
- MM3D C-Map by Jeppesen vector charts
- MM3D DataCore by Navionics vector charts

Who is *TimeZero* **TRIDENT** for?

1. RECREATIONAL YACHTS



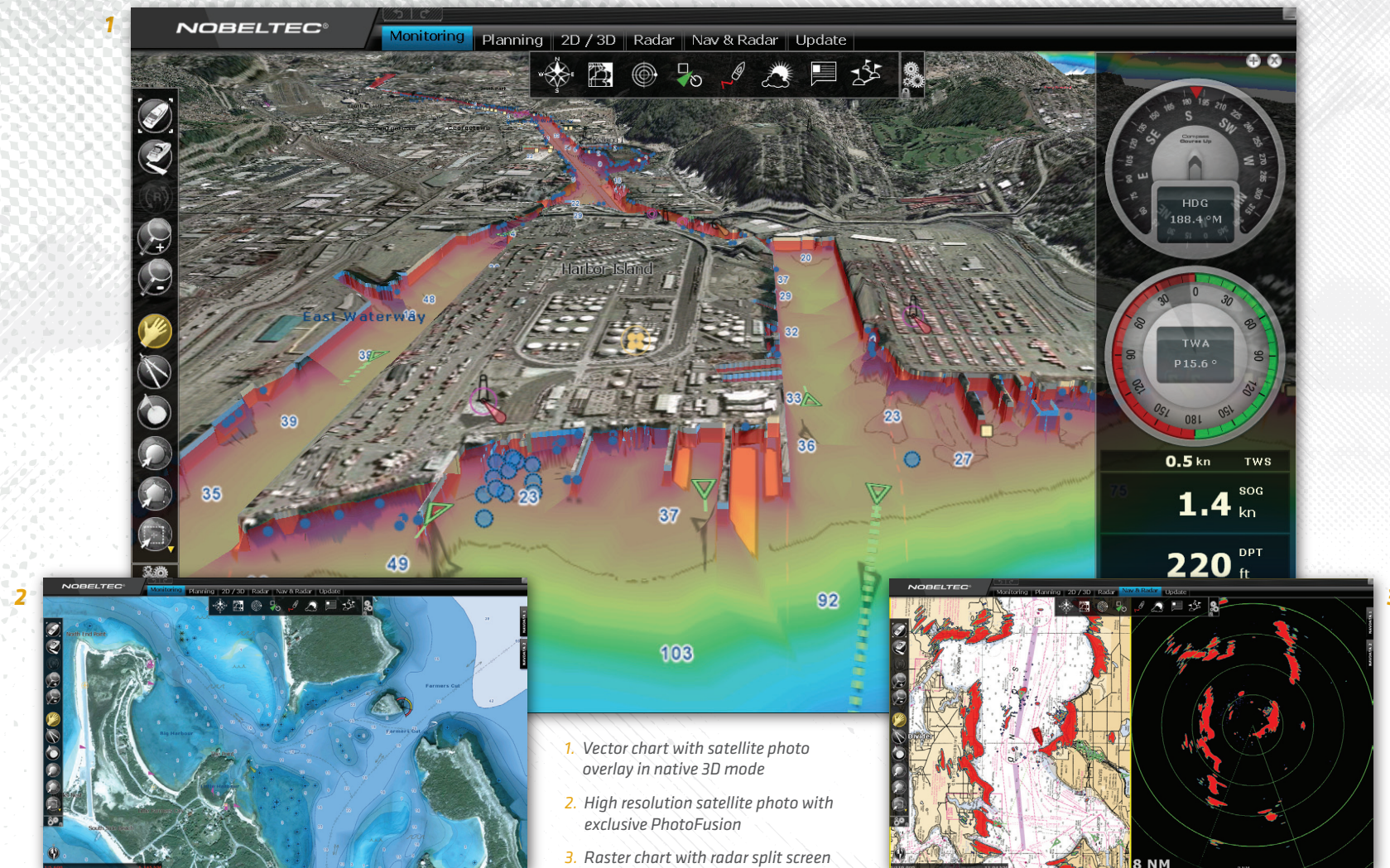
2. INTERNATIONAL CRUISERS



3. LIGHT COMMERCIAL + WORKBOATS



INNOVATIVE USER INTERFACE DESIGNED FOR THE DISCERNING CAPTAIN



1. Vector chart with satellite photo overlay in native 3D mode
2. High resolution satellite photo with exclusive PhotoFusion
3. Raster chart with radar split screen

TimeZero Chart Engine

Fast, Really Fast

Nobeltec's TimeZero Trident uses a new, ultra fast cartographic engine that you have to see to believe. The TimeZero engine redraws charts seamlessly allowing you to easily zoom, pan, change chart display modes and perform other chart handling functions without limited range presets.

Full **3D Environment**

TimeZero Trident incorporates a whole new dimension into chart presentation with full time 3D chart rendering. Choose a 2D top-down view of the navigation chart for a look and feel that replicates traditional chart plotting presentation. Or choose to pan and zoom the chart to any angle at any range scale instantly. There is no limited "3D mode" because Nobeltec TimeZero Trident operates in a true 3D environment at all times.

PhotoFusion

This innovative feature allows you to navigate over raster or vector charts while viewing high-resolution photography. Land areas (zero depth) are completely opaque so these areas are displayed as high-resolution satellite photos on the chart. As the depth increases, the photos become more transparent allowing you to see where shallow water ends and deeper water begins. This is an invaluable aid in identifying sand, rocks, coral and other obstructions found in shallow water.

Realism

The TimeZero Trident system reacts in real time, so your boat moves on the chart realistically. What you see on the screen is fully in-phase with what you are experiencing on the bridge of your ship. The realism of the product will impress you all the more when you are onboard and underway.

FEATURES

- Supported PC operating systems: Windows 7 (32 and 64 bits), Windows Vista, Windows XP
- Connection to instruments: Serial ports (NMEA0183, NMEA 2000*) or Furuno NavNet network by Ethernet (for navigation information)
- Autopilot connection
- Exclusive TimeZero chart engine (Real Time Navigation, Native 3D View and seamless chart redraw without limited range presets)
- Exclusive TimeZero user interface (Work Spaces and Ribbons)
- Advanced professional user interface
- Day, Dusk, and Night modes
- Worldwide planning charts (base map)
- Worldwide 3D database (base map)
- Includes a complete set of US Charts (raster and vector), 3D and high resolution satellite photos (**)
- Exclusive TimeZero PhotoFusion (Intelligent mix of satellite photos and nautical charts)
- MM3D C-MAP by Jeppesen vector chart compatibility
- MM3D DataCore by Navionics vector chart compatibility
- Worldwide tide database
- US tidal currents
- European high resolution tidal currents (Optional)
- European and Bahamian accurate high resolution satellite photos (Optional)
- User interface Auto-Hide feature
- Customizable Toolbar, Ribbons and NavData
- Multi-level Undo and Redo
- Unlimited Vessel Track Recording and Track Line Coloring (with track recall feature)
- Unlimited Marks, Waypoints and Routes
- Unlimited Boundaries, Circles, Lines and Annotations
- Marks and Routes transfer to GPS (***)
- Navigation Logbook
- Worldwide Place Name search (requires an Internet connection)
- Points of Interest (POIs): Online Google Panoramio (Photos can be saved locally for offline viewing)
- POIs: Import your own photos (My Pictures) with automatic geolocation
- POIs: ActiveCaptain (Interactive Cruising Guidebook - see www.ActiveCaptain.com)
- GRIB weather file compatibility
- Nobeltec Weather and Ocean Data Service (Rain, Cloud Coverage, Air Temperature, Wind, Waves, Oceanic Currents, Pressure)
- Ocean Data Service (Sea Surface Temperature, Altimetry, Plankton)
- Weather Forecast, Tides and Currents animation
- Alarms (Anchor Alarm, CPA/TCPA Alarm, Depth Alarm, and more)
- AIS and MARPA target display (with targets lists)
- AIS Online (Global AIS feed through an Internet connection)
- Digital Selective Calling (DSC) and Man Over Board (MOB) device integration
- AXIS IP cameras and video converter support
- FLIR thermal camera integration (Control and Tracking)
- Dual monitor support

FURUNO RADAR SENSORS AND MFD INTEGRATION (Optional)

- Full NavNet 3D network connection
- NavNet3D Chart Server (TimeZero Trident streaming charts to NavNet 3D MFDs)
- Shared chart licensing with NavNet 3D
- Route synchronization with NavNet 3D
- Furuno FAR2XX7 Series Radar network connection
- Full screen radar work space and chart radar overlay (with NavNet 3D and radars)

FURUNO NETWORK SOUNDER INTEGRATION (DFF1, DFF3,...) (Optional)

NOBELTEC InSIGHT RADAR INTEGRATION (Optional)

NOTES:

- (*) Complete NMEA 2000 integration is planned
- (**) Vector Chart coverage subject to available NOAA ENC. High resolution satellite photos for the US are available as a free download
- (***) Standard NMEA0183 \$xxWPL and \$xxRTE sentences are used for the transfer. Check your GPS specifications for compatibility

SYSTEM REQUIREMENTS

- Operating System(s): Windows 7 (32 or 64 bits), Windows Vista, Windows XP
- CPU: 2 GHz Intel Core2Duo highly recommended
- RAM: 2GB (4GB recommended)
- Video Board:
 - Minimum** - Dedicated Video Board (ATI or NVIDIA) with 256MB VRAM or selected Integrated Intel Chipset (*)
 - Recommended** - Dedicated Video Board (ATI or NVIDIA) with 512MB VRAM
- Screen Resolution: 1024x600 or higher
- DVD reader
- Hard Disk: 20GB of free memory
- USB or Serial for connecting instruments
- Network Adapter: 100 Base-T for InSight Radar, NavNet 3D, Furuno Far2XX7 Series Radar connection

NOTE: Intel Graphic Chipset CMA X-3100 and above can be used to run Nobeltec TimeZero Trident

NOBELTEC®

Toll-Free 800.946.2877

Global +1 503.579.1414

Europe/Middle East/Africa +33 5 59 43 81 04

Website: nobeltec.com

© 2011 Nobeltec, Inc. All rights reserved 04/2011