

115/230VAC Monitor Power Supply

Specifications

Input Voltage:

AC Input: 88~132VAC/176~264VAC

(selected by jumper or switch 47~63Hz; 248~370VDC)

Characteristics:

DC Output Voltage: 12.1VDC- Factory Preset

Output V. Tolerance: +/-1%

Output Rated Current: 8.5A

Output Current Range: 0~ 8.5A

Ripple & Noise: 125mVp-p

Line Regulation: +/- 0.5%

Load Regulation: +/- 0.5%

DC Output Power: 102W

Efficiency: 80%

DC Voltage Adj.: +/- 10%

Input Current: 2.4A/115V 1.2A/230V

Over Voltage Protection: 115%~135%

Overload Protection: 105%~150% Type: Pulsing hiccup
shutdown reset: Auto Recovery

Temp. Coefficient: +/- 0.03%/C (0-50 C)

Setup / Rise time: 1s / 30 ms

Withstand Voltage: I/P-O/P: 3KVAC
I/P-FG: 1.5KVAC
O/P-FG: 0.5KVAC

Isolation Resistance: I/P-O/P, I/P-FG, O/P-FG:
500VDC / 100M Ohms

Environmental:

*Operating Temp: -10°C to +60°C

Storage Temp: -20°C to +85°C

Operating Humidity: 20% to 90% (Non-Condensing)

Storage Humidity: 10% to 95% (Non-Condensing)

Shock: 10g, 11msec ½ Sine Wave

Vibration: 10~500Hz, 2G 10Min./1 Cycle,
Period for 60min. Each Axis

**We DO NOT recommend routine operation @ extreme temperatures.*

Mechanical Description

Construction:

Housing: Preformed Aluminium

Ventilation: Perforated Ventilated Case

Mounting Style:

2 bolt direct through chassis,
Surface: horizontally, vertically or
inverted

Dimensions:

4.0"W x 1.5"H x 7.7/8"D

Power Supply: 101.47mm W x 37.97mm H x
200.15mm D

Weight:

Weight (kg): 1.4 lbs (0.65) kg

Approvals / Warranty

Compliance: CE; CISPR22 / EN 550222

IEC801,2,3,4 IEC555-2, FCC

Limited Warranty: 1 Year

Ordering Codes

Configuration:

Part Number 00-0301

Compatible Nauticomp Monitors:

10" 18-1010, 20-1010

12" 17-1210, 18-1210
19-1210, 20-1210
21-1210, 22-1210

15" 17-1510, 18-1510
19-1510, 20-1510
21-1510, 22-1510

18" 19-1810, 20-1810

19" 21-1910, 22-1910

21" 21-2110, 22-2110

Shipping:

Carton Size (cm): 10" (25) W x 4" (10) H x
8" (20) D

Weight (kg): 6.0 lbs (2.7)

Canadian
Headquarters: **Nauticomp Inc.**
8 Callaghan Road
Lindsay, Ontario,
Canada, K9V 4R4.
p: +1 705-328-2992
f: +1 705-328-2990

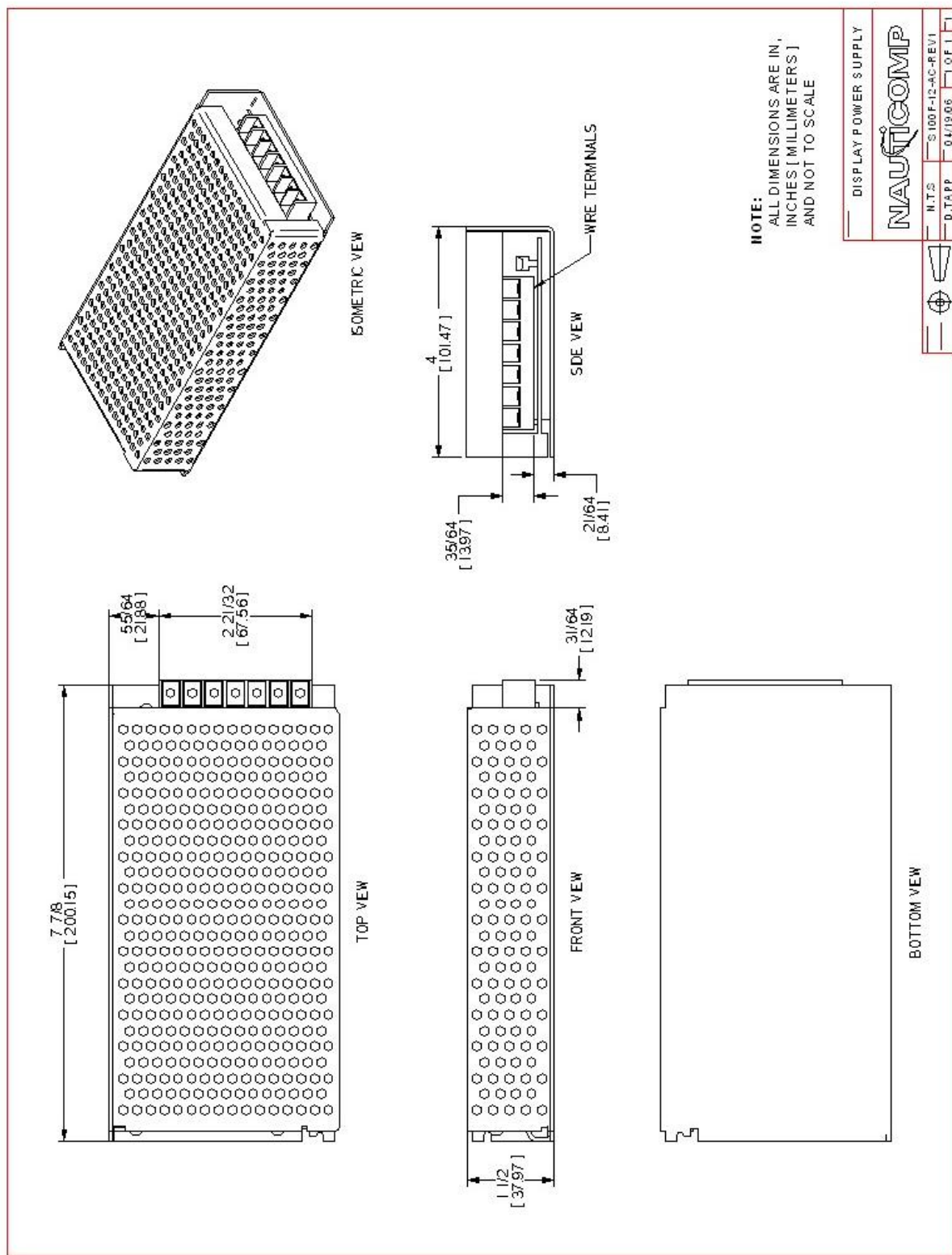
United Kingdom: **Nauticomp European Distribution**
CA Clase
2 Mornington Place, Waterberry Drive,
Waterlooville, Hants, PO7 7XX
p: +44 2392 247920
f: +44 2392 261959

United States: **Nauticomp International**
1200 NE 7th Avenue
Fort Lauderdale, Florida
United States 33304.
p: +1 954 235 4875
f: +1 705-328-2990

URL: www.nauticomp.com E-Mail: sales@nauticomp.com

Due to a policy of continuous product development NAUTICOMP reserves the right to change specifications and descriptions without prior notification. All trade marks acknowledged.

115/230VAC Monitor Power Supply



Canadian
Headquarters:

Nauticomp Inc.
8 Callaghan Road
Lindsay, Ontario,
Canada, K9V 4R4.
p: +1 705-328-2992
f: +1 705-328-2990

United Kingdom:

Nauticomp European Distribution
CA Clase
2 Mornington Place, Waterberry Drive,
Waterlooville, Hants, PO7 7XX
p: +44 2392 247920
f: +44 2392 261959

United States:

Nauticomp International
1200 NE 7th Avenue
Fort Lauderdale, Florida
United States 33304.
p: +1 954 235 4875
f: +1 705-328-2990

URL: www.nauticomp.com E-Mail: sales@nauticomp.com

Due to a policy of continuous product development NAUTICOMP reserves the right to change specifications and descriptions without prior notification. All trade marks acknowledged.