

# 24VDC Monitor Power Supply

## Specifications

### Input Voltage:

DC Input: 19~36VDC

### Characteristics:

DC Output Voltage: 12.1VDC- Factory Preset

Output V. Tolerance: +/-1%

Output Rated Current: 4.2A

Output Current Range: 0~ 4.2A

Ripple & Noise: 120mVp-p

Line Regulation: +/- 0.3%

Load Regulation: +/- 0.3%

DC Output Power: 50.4W

Efficiency: 75%

DC Voltage Adj.: 11~16V

Input Current: 3A/24V

Over Voltage Protection: 16.8V ~ 20V/10% Load

Overload Protection: 105%~150% Type: Fold back  
Current Limiting Reset  
Auto Recovery

Temp. Coefficient: +/- 0.03%/C (0-50 C)

Setup / Rise time: 2.5s / 50 ms

Withstand Voltage: I/P-O/P: 1.5KVAC  
I/P-FG: 1.5KVAC  
O/P-FG: 0.5KVAC

Isolation Resistance: I/P-O/P, I/P-FG, O/P-FG:  
500VDC / 100M Ohms

### Environmental:

\*Operating Temp: -10°C to +60°C

Storage Temp: -20°C to +85°C

Operating Humidity: 20% to 90% (Non-Condensing)

Storage Humidity: 10% to 95% (Non-Condensing)

Shock: 10g, 11msec ½ Sine Wave

Vibration: 10~500Hz, 2G 10Min./1 Cycle,  
Period for 60min. Each Axis

*\*We DO NOT recommend routine operation @ extreme temperatures.*

## Mechanical Description

### Construction:

Housing: Preformed Aluminium

Ventilation: Perforated Ventilated Case

### Mounting Style:

2 bolt direct through chassis,  
Surface: horizontally, vertically or  
inverted

### Dimensions:

4.0"W x 1.5"H x 6.17/64"D

Power Supply: 101.47mm W x 37.97mm H x  
159mm D

### Weight:

Weight (kg): 1.1 lbs (0.5) kg

## Approvals / Warranty

**Compliance:** CE; CISPR22 / EN 550222

FCC Part 15 Section 15.109

**Limited Warranty:** 1 Year

## Ordering Codes

### Configuration:

Part Number 00-0303

### Compatible Nauticomp Monitors:

10" 18-1010, 20-1010

12" 17-1210, 18-1210  
19-1210, 20-1210  
21-1210, 22-1210

15" 17-1510, 18-1510  
19-1510, 20-1510  
21-1510, 22-1510

18" 19-1810, 20-1810

19" 21-1910, 22-1910

21" 21-2110, 22-2110

### Shipping:

Carton Size (cm): 10" (25) W x 4" (10) H x  
8" (20) D

Weight (kg): 6.0 lbs (2.7)

Canadian  
Headquarters: **Nauticomp Inc.**  
8 Callaghan Road  
Lindsay, Ontario,  
Canada, K9V 4R4.  
p: +1 705-328-2992  
f: +1 705-328-2990

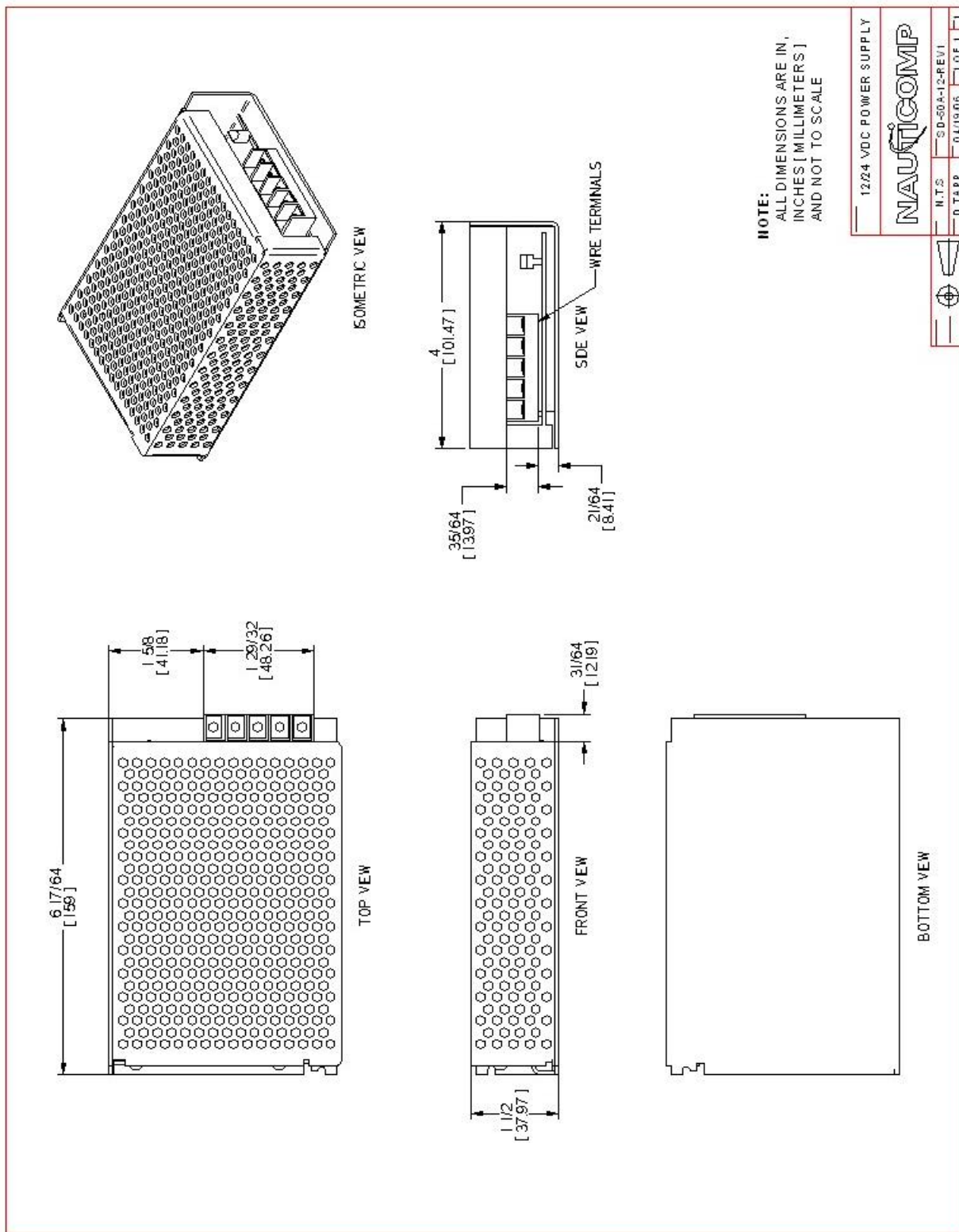
United Kingdom: **Nauticomp European Distribution**  
CA Clase  
2 Mornington Place, Waterberry Drive,  
Waterlooville, Hants, PO7 7XX  
p: +44 2392 247920  
f: +44 2392 261959

United States: **Nauticomp International**  
1200 NE 7th Avenue  
Fort Lauderdale, Florida  
United States 33304.  
p: +1 954 235 4875  
f: +1 705-328-2990

URL: [www.nauticomp.com](http://www.nauticomp.com) E-Mail: [sales@nauticomp.com](mailto:sales@nauticomp.com)

Due to a policy of continuous product development NAUTICOMP reserves the right to change specifications and descriptions without prior notification. All trade marks acknowledged.

## 24VDC Monitor Power Supply



**Canadian Headquarters:** **Nauticomp Inc.**  
8 Callaghan Road  
Lindsay, Ontario,  
Canada, K9V 4R4.  
p: +1 705-328-2992  
f: +1 705-328-2990

United Kingdom: **Nauticomp European Distribution**  
CA Clase  
2 Mornington Place, Waterberry Drive,  
Waterlooville, Hants, PO7 7XX  
p: +44 2392 247920  
f: +44 2392 261959

United States: **Nauticomp International**  
1200 NE 7th Avenue  
Fort Lauderdale, Florida  
United States 33304.  
p: +1 954 235 4875  
f: +1 705-328-2990

**URL: [www.nauticomp.com](http://www.nauticomp.com) E-Mail: [sales@nauticomp.com](mailto:sales@nauticomp.com)**

Due to a policy of continuous product development NAUTICOMP reserves the right to change specifications and descriptions without prior notification. All trade marks acknowledged.