

12VDC Nina Computer Power Supply

Specifications

Input Voltage:

DC Input: 9.2~16V

Characteristics:

DC Output Voltage: 12V

MTBF (H): 470,000

Output Rated Current: 9A

Switching Frequency: 91kHz Fix.

Ripple & Noise: 170mVp-p

Line Regulation (max): 96mV

Load Regulation (max): 108mV

Rise Up Time: 500mS (max) @25°C

Efficiency: 81%

DC Voltage Adj.: +/- 10% (at no load)

Input Current: 11.11A (Typ.)

Drift: 75mV (Max)

Recovery Time: 0.5mS

Temp. Coefficient: +/- 0.03%/C (25°C)

Setup / Rise time: 500mS (max) @ 25°C

Dynamic Load Regulation: 360mV (charged Between 20% and 75% of rated output current)

Isolation Resistance: P-S-FG 50M Ohms (Min) by DC500V Insulation Tester

PS AC1, 500V for 1min

Withstanding Voltage: PF AC1, 500V for 1min
SFG AC1, 500V for 1min

Environmental:

*Operating Temp: 0°C to +50°C

Storage Temp: -20°C to +85°C

Operating Humidity: 85% (Non-Condensing)

Storage Humidity: 10% to 95% (Non-Condensing)

Shock: 294m/s²

5-10Hz: 10mm double amplitude,

Vibration (Non Operating): 10-55Hz: 19.6m/s² 20Min, for 60 Min, each x, y and z.

**We DO NOT recommend routine operation @ extreme temperatures.*

Mechanical Description

Construction:

Housing: Preformed Aluminium

Ventilation: Perforated Ventilated Case

Mounting Style:

Surface: 4 bolt bracket, horizontally, vertically or inverted

Dimensions:

3.0"W x 3 29/32"H x 8.16"D

Power Supply: 76.2mm W x 99.26mm H x 207.39mm D

Weight:

Weight (kg): 1.75 lbs (0.79) kg

Approvals / Warranty

Compliance: CE; CISPR22 / EN 550222

FCC Part 15 Section 15.109

Limited Warranty: 1 Year

Ordering Codes

Configuration:

Part Number 00-0306

Compatible Nauticomp PC's:

Nina CelX 40-6666, 40-6667

Nina PenX 40-7777, 40-7778

Nina PenX Plus 40-7779

Shipping:

Carton Size (cm): 10" (25) W x 4" (10) H x 8" (20) D

Weight (kg): 6.0 lbs (2.7)

Canadian Headquarters: **Nauticomp Inc.**
8 Callaghan Road
Lindsay, Ontario,
Canada, K9V 4R4.
p: +1 705-328-2992
f: +1 705-328-2990

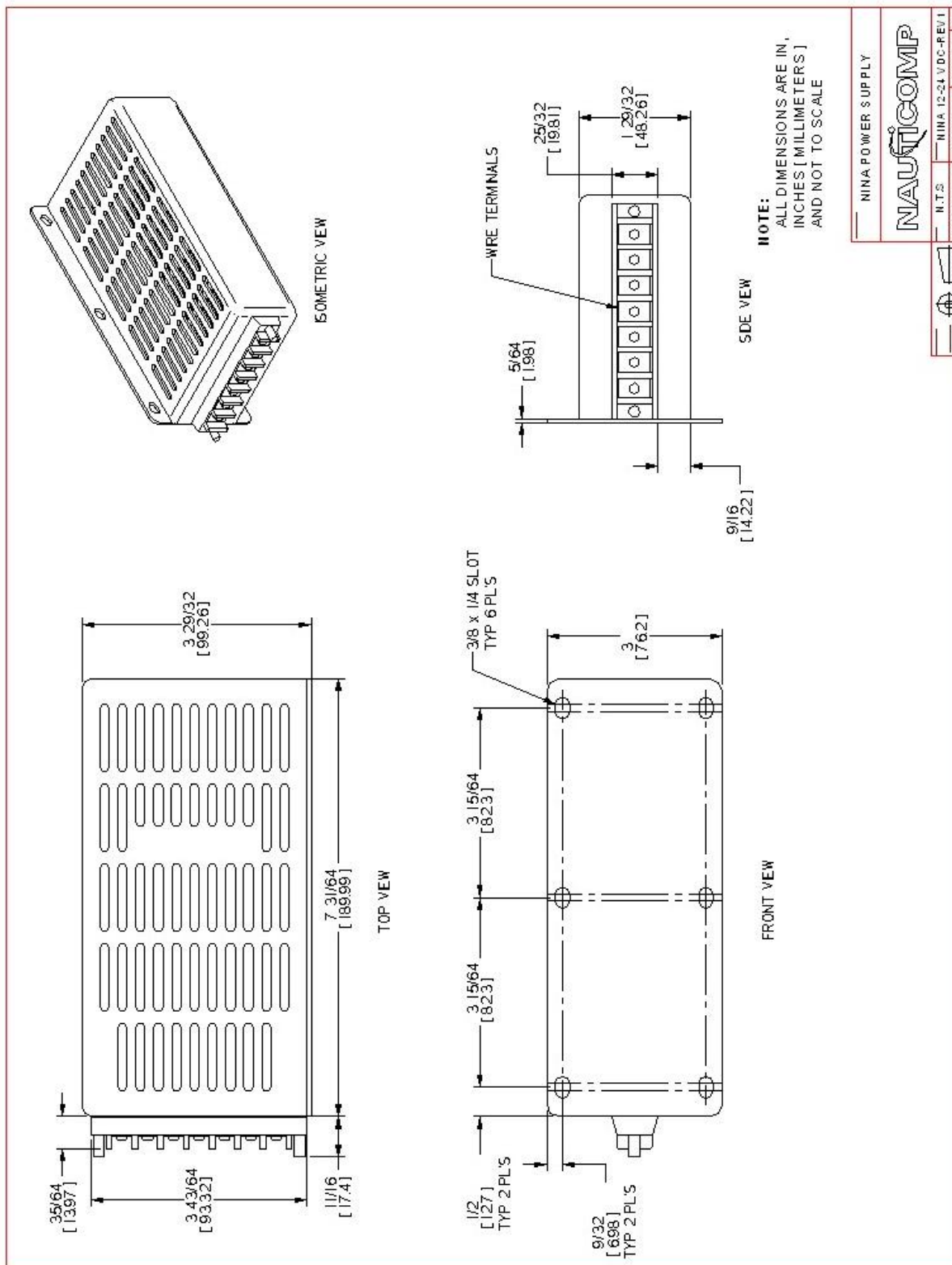
United Kingdom: **Nauticomp European Distribution**
CA Clase
2 Mornington Place, Waterberry Drive,
Waterlooville, Hants, PO7 7XX
p: +44 2392 247920
f: +44 2392 261959

United States: **Nauticomp International**
1200 NE 7th Avenue
Fort Lauderdale, Florida
United States 33304.
p: +1 954 235 4875
f: +1 705-328-2990

URL: www.nauticomp.com E-Mail: sales@nauticomp.com

Due to a policy of continuous product development NAUTICOMP reserves the right to change specifications and descriptions without prior notification. All trade marks acknowledged.

12VDC Nina Computer Power Supply



Canadian
Headquarters:

Nauticomp Inc.
8 Callaghan Road
Lindsay, Ontario,
Canada, K9V 4R4.
p: +1 705-328-2992
f: +1 705-328-2990

United Kingdom:

Nauticomp European Distribution
CA Clase
2 Mornington Place, Waterberry Drive,
Waterlooville, Hants, PO7 7XX
p: +44 2392 247920
f: +44 2392 261959

United States:

Nauticomp International
1200 NE 7th Avenue
Fort Lauderdale, Florida
United States 33304.
p: +1 954 235 4875
f: +1 705-328-2990

URL: www.nauticomp.com E-Mail: sales@nauticomp.com

Due to a policy of continuous product development NAUTICOMP reserves the right to change specifications and descriptions without prior notification. All trade marks acknowledged.