

15.0" Bezel Button I Display

Electrical Description

Display Characteristics:

Type: 15.0" Active Matrix TFT
Dot Number: 1024 x 768 Pixels
Dot Pitch: 0.297mm
Response Time: 8ms Average- Typical
Contrast Ratio: 700:1 Typical
Brightness/Light Intensity: 1100 cd/m² (Enhanced for Sunlight Readability)
Viewing Angles (at CR>10): 70° Left/Right, 65° Up 60° Down
Backlight Life: 50,000 Hours- Typical
Colour Depth: 16.7 Million (Depending on Graphics Card)

Dimming Circuit:

Range: Full Brightness to Black
with "Dim to Red or Green or Blue"
at any level
Backlight Options: Day Mode and NVIS Mode Switched
by Toggle Switch (NVIS Type II
Class B Compliant)

DVI-D Input:

Digital Interface: DVI 1.0 Compatible Interface
85Hz Operation

Analog RGB Input:

Analog Interface: 85 Hz Maximum Analog Bandwidth
0.5V to 1.0V Analog Input Range
Sync-on-Green (-ve) 0.3V

Synchronisation Range:

Horizontal Scan: 31.469-79.976 kHz*
Vertical Scan: 56-87 Hz*

**Depending on resolution*

Resolutions:

VESA Support for: 1280 x 1024 SXGA
1024 x 768 XGA*
800 x 600 SVGA
640 x 480 VGA

**Recommended for optimised resolution*

Active Display Area:

Active Display Area: 304.128 mm x 228.096 mm

Input Voltage:

DC Input: 24V DC Regulated
Via external power supply

Power Consumption:

1.8 A (43 W) Max.

Environmental:

*Operating Temp: -4 to +140°F / -20 to +60°C
Storage Temp: -4 to +149°F / -20 to +65 °C
Operating Humidity: 30% to 90% (Non-Condensing)
Storage Humidity: 10% to 90% (Non-Condensing)
Shock: 10g, 11msec ½ Sine Wave
Vibration: +/-1mm, 2 to 13Hz:0.7g 13 to 100Hz

**We DO NOT recommend routine operation @ extreme temperatures.*

Mechanical Description

Construction:

Finish: Black Fine Textured Semi Gloss
Powder Coat
Housing: Preformed Aluminium
Sealing: Waterproof NEMA 6 / IP67
Touch Glass : Bonded, Glass on Glass Resistive
Touch, AG Coating
Ventilation: Convection

Mounting Style:

Surface (mm): 4 x 10-32 Blind Pems in Back to be
Fastened from Rear to no more than
12" lbs of Torque
Panel Cut-Out Size (mm): 12.575" (319.4) W x
8.5" (215.9) H

Dimensions:

Display (mm): 15.407" (391.34) W x
11.719" (297.66) H x
3" (76.2) D
Bezel Buttons (mm): 0.877" (22.27) W x
0.75" (19.05) H

Weight:

Weight (kg): 12 lbs (5.5)

Input Connectors: (rated @ NEMA 6 / IP67)

RGB Signal: 15 Pin Male Circular Connector
DVI Signal: 19 Pin Male Circular Connector
Power: 2 Pin Male Circular Connector
Touch: 5 Pin Male Circular Connector
Bezel Buttons: USB Type B Connector

Menu Controls:

Via Front Mounted Buttons: OSD Picture Features:
Size, Position, Colour and Input
Selection

Approvals / Warranty

Compliance (Pending): CE:IEC60945/ CISPR22 / EN
55022 FCC Part 15 Section 15.109

Limited Warranty: 2 Year

Ordering Codes

Configuration:

15.0" Bezel Button I Display: TBA

External Power Supply:

24vdc Input: IP68 Sealed Axiomatic

Shipping:

Carton Size (cm): 21" (53) W x 20" (51) H x 10" (25) D
Weight (kg): 26 lbs (12)

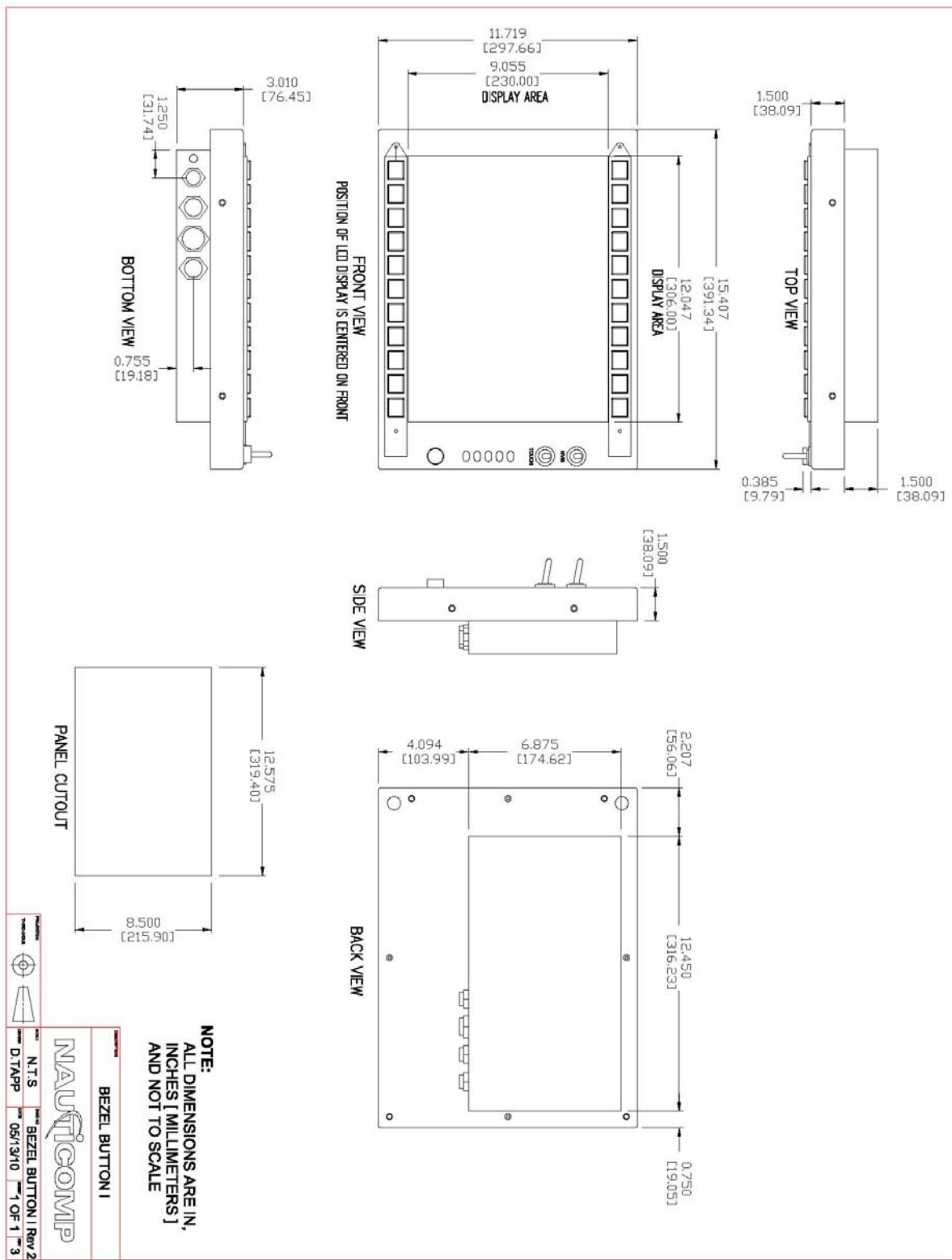
Canadian
Headquarters: **Nauticomp Inc.**
8 Callaghan Road
Lindsay, Ontario,
Canada, K9V 4R4.
p: +1 705-328-2992
f: +1 705-328-2990

United States: **Nauticomp International**
1200 NE 7th Avenue
Fort Lauderdale, Florida
United States 33304.
p: +1 954 235 4875
f: +1 705-328-2990

URL: www.nauticomp.com E-Mail: sales@nauticomp.com

Due to a policy of continuous product development NAUTICOMP reserves the right to change specifications and descriptions without prior notification. All trade marks acknowledged.

15.0" Bezel Button I Display



Canadian Headquarters: **Nauticomp Inc.**
8 Callaghan Road
Lindsay, Ontario,
Canada, K9V 4R4.
p: +1 705-328-2992
f: +1 705-328-2990

United States: **Nauticomp International**
1200 NE 7th Avenue
Fort Lauderdale, Florida
United States 33304.
p: +1 954 235 4875
f: +1 705-328-2990

URL: www.nauticomp.com E-Mail: sales@nauticomp.com

Due to a policy of continuous product development NAUTICOMP reserves the right to change specifications and descriptions without prior notification. All trade marks acknowledged.