

12.1" Daylight Signature Display

Electrical Description

Display Characteristics:

Type: 12.1" Active Matrix TFT
Dot Number: 1024 x 768 Pixels
Dot Pitch: 0.24mm
Response Time: 50ms Average- Typical
Contrast Ratio: 250:1 Min.
Brightness / Light Intensity: Enhanced to 500cd/m² (Nits)- Typical
Viewing Angles (at CR>10): 60° Left/Right, 50° Up & 50° Down
Backlight Life: 50,000 Hours- Typical
Colour Depth: 16.7 Million (Depending on Graphics Card)

Dimming Circuit:

Range: Full Brightness to Red (VGA Only)

DVI-D Input:

Digital Interface: DVI 1.0 Compatible Interface
85Hz Operation

Analog RGB Input:

Analog Interface: 85 Hz Maximum Analog Bandwidth
0.5V to 1.0V Analog Input Range
Sync-on-Green (-ve) 0.3V

Synchronisation Range:

Horizontal Scan: 31.469-79.976kHz*
Vertical Scan: 56-87 Hz*

**Depending on resolution*

Resolutions:

VESA Support for: 1600 x 1200 UXGA
1280 x 1024 SXGA
1024 x 768 XGA*
800 x 600 SVGA
640 x 480 VGA

**Recommended for optimised resolution*

Active Display Area:

Active Display Area: 246.06 mm x 184.55 mm

Composite Video Input:

PAL, NTSC & SECAM with
'Picture In Picture' PIP Facility

Input Voltage:

DC Input: 12.1V DC Regulated
Via external power supply - Refer to ordering codes...

Power Consumption:

2.0 A (25 W) Max

Environmental:

*Operating Temp: 32 to +131°F / 0 to +55°C
Storage Temp: -4 to +140°F / -20 to +61°C
Operating Humidity: 30% to 90% (Non-Condensing)
Storage Humidity: 10% to 90% (Non-Condensing)
Shock: 10g, 11msec ½ Sine Wave
Vibration: +/-1mm, 2 to 13Hz:0.7g 13 to 100Hz

**We DO NOT recommend routine operation @ extreme temperatures.*

Mechanical Description

Construction:

Finish: Black Fine Textured Semi Gloss
Powder Coat
Housing: Preformed Aluminium
Sealing: Waterproof NEMA 6 / IP67
Toughened Safety Glass : Bonded, Contrast Enhancing,
Optically Coated and Polarized
Ventilation: Convection

Mounting Style:

Surface:(mm) Surface Mounted with 1 5/8" (41.28)
Protruding and Fastened with
4 Mounting Studs
Panel Cut-Out Size (mm): 11 13/64" (284.56) x 8 35/64 (217.09)

Dimensions:

12 29/32" (327.82) W x
Display (mm): 9 29/32" (251.62) H x
4 5/64" (103.58) D

Weight:

Weight (kg): 8 lbs (3.6)

Input Connections: (rated @ NEMA 6 / IP67)

RGB Signal: 15 Pin Male Connector*
DVI Signal: DVI-D Male Connector*
Composite Signal: RCA Male Jack*
Power: 14 Gauge Black/Red wire*

**Connections listed are ends on 10' (3 Meter) pass thru type cables
permanently connected to display*

Menu Controls:

Via Front Mounted Buttons: OSD Picture Features:
Size, Position, Colour & PIP

Approvals / Warranty

Compliance: CE:IEC609451 / CISPR22 / EN
55022 Part 15 Section 15.109

Limited Warranty: 3 Year

Ordering Codes

Configuration:

12.1" Daylight Display: 19-1210
Please select external power supply from list below...

External Power Supply:

External 115/230V: 00-0301
External 12V DC: 00-0302
External 24V DC: 00-0303

Shipping:

Carton Size (cm): 21" (53) W x 20" (51) H x 10" (25) D
Weight (kg): 26.0 lbs (12)

Canadian
Headquarters: **Nauticomp Inc.**
8 Callaghan Road
Lindsay, Ontario,
Canada, K9V 4R4.
p: +1 705-328-2992
f: +1 705-328-2990

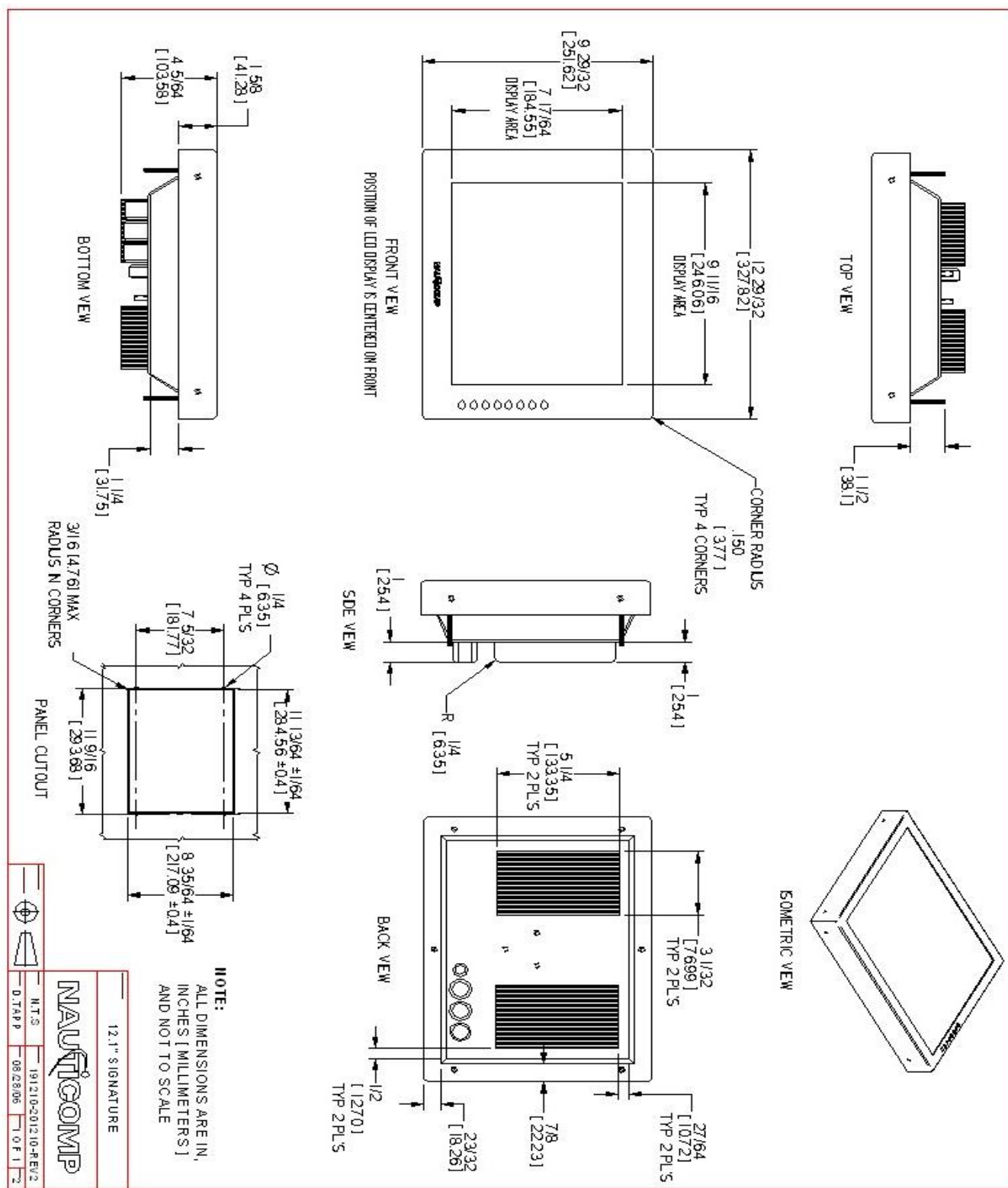
United Kingdom: **Nauticomp European Distribution**
CA Clase
2 Mornington Place, Waterberry Drive,
Waterlooville, Hants, PO7 7XX
p: +44 2392 247920
f: +44 2392 261959

United States: **Nauticomp International**
1200 NE 7th Avenue
Fort Lauderdale, Florida
United States 33304.
p: +1 954 235 4875
f: +1 705-328-2990

URL: www.nauticomp.com E-Mail: sales@nauticomp.com

Due to a policy of continuous product development NAUTICOMP reserves the right to change specifications and descriptions without prior notification. All trade marks acknowledged.

12.1" Daylight Signature Display



Canadian
Headquarters:

Nauticomp Inc.
8 Callaghan Road
Lindsay, Ontario,
Canada, K9V 4R4.
p: +1 705-328-2992
f: +1 705-328-2990

United Kingdom:

Nauticomp European Distribution
CA Clase
2 Mornington Place, Waterberry Drive,
Waterlooville, Hants, PO7 7XX
p: +44 2392 247920
f: +44 2392 261959

United States:

Nauticomp International
1200 NE 7th Avenue
Fort Lauderdale, Florida
United States 33304.
p: +1 954 235 4875
f: +1 705-328-2990

URL: www.nauticomp.com E-Mail: sales@nauticomp.com

Due to a policy of continuous product development NAUTICOMP reserves the right to change specifications and descriptions without prior notification. All trade marks acknowledged.