

# 10.4" Sunlight Signature Display

## Electrical Description

### Display Characteristics:

Type: 10.4" Active Matrix TFT  
Dot Number: 1024 x 768 Pixels  
Dot Pitch: 0.2055mm  
Response Time: 50ms Average- Typical  
Contrast Ratio: 300:1 Min.  
Brightness / Light Intensity: Enhanced to 1600cd/m<sup>2</sup> (Nits)- Typical  
Viewing Angles (at CR>10): 60° Left/Right, 50° Up & 60° Down  
Backlight Life: 25,000 Hours- Typical  
Colour Depth: 16.7 Million (Depending on Graphics Card)

### Dimming Circuit:

Range: Full Brightness to Red (VGA Only)

### Analog RGB Input:

Analog Interface: 85 Hz Maximum Analog Bandwidth  
0.5V to 1.0V Analog Input Range  
Sync-on-Green (-ve) 0.3V

### Synchronisation Range:

Horizontal Scan: 31.469-79.976kHz\*  
Vertical Scan: 56-87 Hz\*

*\*Depending on resolution*

### Resolutions:

VESA Support for: 1600 x 1200 UXGA  
1280 x 1024 SXGA  
1024 x 768 XGA\*  
800 x 600 SVGA  
640 x 480 VGA

*\*Recommended for optimised resolution*

### Active Display Area:

Active Display Area: 210.9 mm x 158.29 mm

### Composite Video Input:

PAL, NTSC & SECAM with  
'Picture In Picture' PIP Facility

### Input Voltage:

DC Input: 12.1V DC Regulated  
*Via external power supply - Refer to ordering codes...*

### Power Consumption:

2.8 A (35 W) Max.

### Environmental:

\*Operating Temp: 32 to +131°F / 0 to +55°C  
Storage Temp: -4 to +140°F / -20 to +61°C  
Operating Humidity: 30% to 90% (Non-Condensing)  
Storage Humidity: 10% to 90% (Non-Condensing)  
Shock: 10g, 11msec ½ Sine Wave  
Vibration: +/-1mm, 2 to 13Hz:0.7g 13 to 100Hz

*\*We DO NOT recommend routine operation @ extreme temperatures.*

## Mechanical Description

### Construction:

Finish: Black Fine Textured Semi Gloss  
Powder Coat  
Housing: Preformed Aluminium  
Sealing: Waterproof NEMA 6 / IP67  
Toughened Safety Glass : Bonded, Contrast Enhancing,  
Optically Coated and Polarized  
Ventilation: Convection

### Mounting Style:

Surface (mm): Surface Mounted with 1 1/2" (38.1)  
Protruding and Fastened with  
4 Mounting Studs

Panel Cut-Out Size (mm): 10 5/64" (255.98) x  
8 17/64" (209.95)

### Dimensions:

11 41/64" (295.67)W x  
Display (mm): 8 27/32" (224.63) H x  
3 47/64" (94.85) D

### Weight:

Weight (kg): 5.25 lbs (2.4)

### Input Connections: (rated @ NEMA 6 / IP67)

RGB Signal: 15 Pin Male Connector\*  
DVI Signal: DVI-D Male Connector\*  
Composite Signal: RCA Male Jack\*  
Power: 14 Gauge Black/Red wire\*

*\*Connections listed are ends on 10' (3 Meter) pass thru type cables  
permanently connected to display*

### Menu Controls:

Via Front Mounted Buttons: OSD Picture Features:  
Size, Position, Colour & PIP

## Approvals / Warranty

**Compliance:** CE:609451 / CISPR22 / EN 5022  
FCC Part 15 Section 15.109

**Limited Warranty:** 3 Year

## Ordering Codes

### Configuration:

10.4" Sunlight Display: 20-1010  
*Please select external power supply from list below...*

### External Power Supply:

External 115/230V: 00-0301  
External 12V DC: 00-0302  
External 24V DC: 00-0303

### Shipping:

Carton Size (cm): 21" (53) W x 20" (51) H x 10" (25) D  
Weight (kg): 26.0 lbs (12)

Canadian  
Headquarters: **Nauticomp Inc.**  
8 Callaghan Road  
Lindsay, Ontario,  
Canada, K9V 4R4.  
p: +1 705-328-2992  
f: +1 705-328-2990

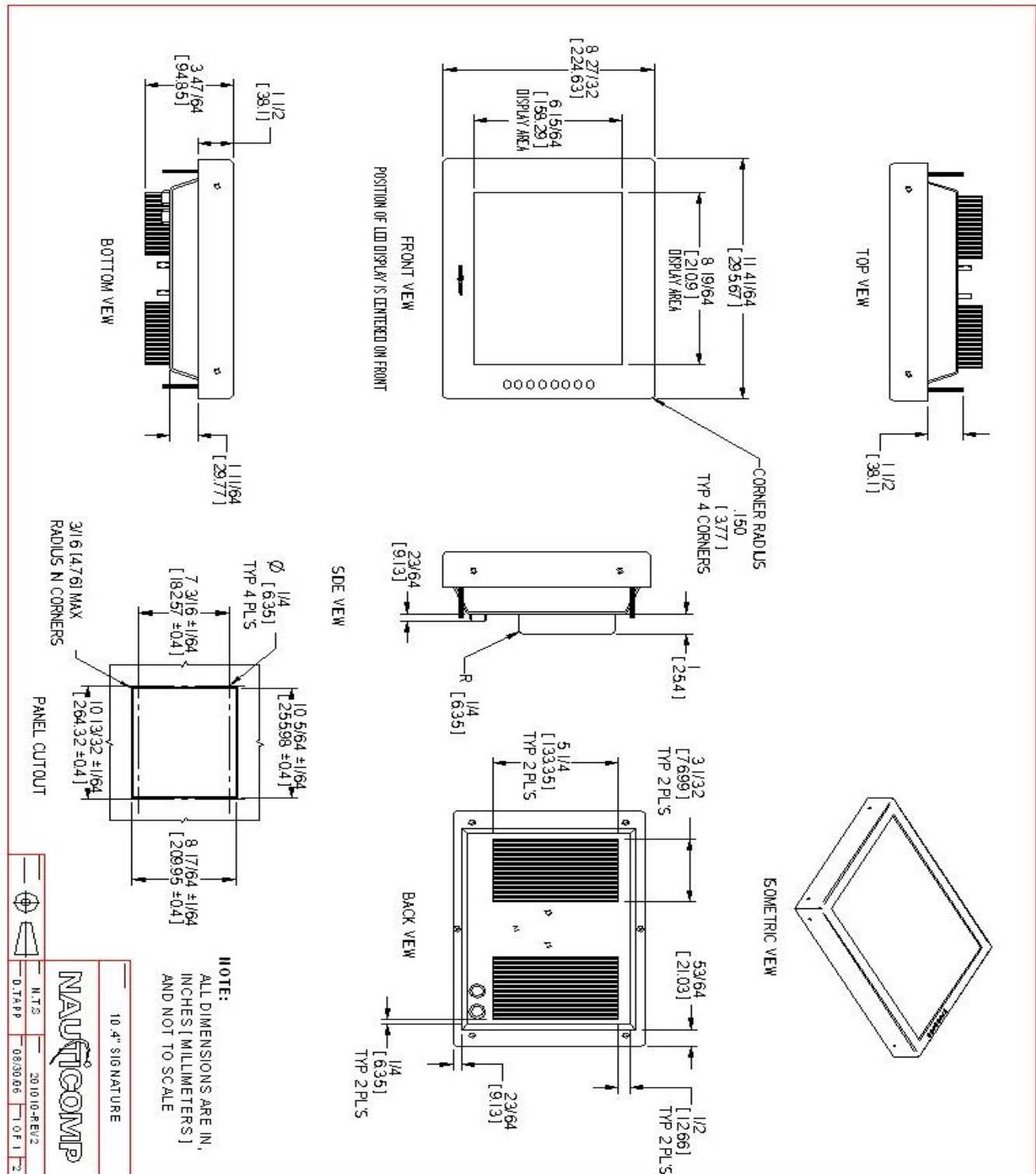
United Kingdom: **Nauticomp European Distribution**  
CA Clase  
2 Mornington Place, Waterberry Drive,  
Waterlooville, Hants, PO7 7XX  
p: +44 2392 247920  
f: +44 2392 261959

United States: **Nauticomp International**  
1200 NE 7th Avenue  
Fort Lauderdale, Florida  
United States 3332.  
p: +1 954 235 4875  
f: +1 705-328-2990

URL: [www.nauticomp.com](http://www.nauticomp.com) E-Mail: [sales@nauticomp.com](mailto:sales@nauticomp.com)

Due to a policy of continuous product development NAUTICOMP reserves the right to change specifications and descriptions without prior notification. All trade marks acknowledged.

## 10.4" Sunlight Signature Display



Canadian  
Headquarters:

**Nauticomp Inc.**  
8 Callaghan Road  
Lindsay, Ontario,  
Canada, K9V 4R4.  
p: +1 705-328-2992  
f: +1 705-328-2990

United Kingdom:

**Nauticomp European Distribution**  
CA Clase  
2 Mornington Place, Waterberry Drive,  
Waterlooville, Hants, PO7 7XX  
p: +44 2392 247920  
f: +44 2392 261959

United States:

**Nauticomp International**  
1200 NE 7th Avenue  
Fort Lauderdale, Florida  
United States 3332.  
p: +1 954 235 4875  
f: +1 705-328-2990

URL: [www.nauticomp.com](http://www.nauticomp.com) E-Mail: [sales@nauticomp.com](mailto:sales@nauticomp.com)

Due to a policy of continuous product development NAUTICOMP reserves the right to change specifications and descriptions without prior notification. All trade marks acknowledged.