

19" Centric Series Display

Electrical Description

Display Characteristics:

Type: 19" Active Matrix TFT
Dot Number: 1280 X 1024 Pixels
Dot Pitch: 0.24mm
Response Time: 20ms Average- Typical
Contrast Ratio: 700:1 Min.
Brightness / Light Intensity: 250 cd/m² (Nits)- Typical
Viewing Angles (at CR>10): +/- 75°
Backlight Life: 50,000 Hours- Typical
Colour Depth: 16.7 Million (Depending on Graphics Card)

Dimming Range:

0-100% (Ratio:1000:1)

DVI-I Input:

Analog Interface: 330 MHz Max. Analog Bandwidth
0.5V to 1.0V Analog Input Range
Sync-on-Green (-ve) 0.3V

Digital Interface: DVI 1.0 Compatible Interface
108 MHz Operation

Synchronisation Range:

Horizontal Scan: 31 - 80 kHz*
Vertical Scan: 56 - 85 Hz*
**Depending on resolution*

Resolutions:

VESA Support for: 1280 X1024 SXGA*
1024 x 768 XGA
800 x 600 SVGA
640 x 480 VGA

**Recommended for optimised resolution...*

Active Display Area:

Active Display Area: 376.3 H mm x 301.5 W mm

Composite Video Input:

PAL& NTSC with 'Picture In Picture' Facility

Input Voltage:

DC Input: 115/240V AC, 24V DC

Power Consumption:

55 W (AC), 45 W (DC)

Environmental:

*Operating Temp: -15 to +55°C (IEC 60945)
Storage Temp: -25 to +70°C
Operating Humidity: 30% to 90% (Non-Condensing)
Storage Humidity: 10% to 90% (Non-Condensing)
Shock: 10g, 11msec ½ Sine Wave
Vibration: +/-1mm, 2 to 13Hz: 0.7g 13 to 100 Hz

**We DO NOT recommend routine operation @ extreme temperatures...*

Mechanical Description

Construction:

Finish: Grey RAL 7015 Front, RAL 7016 Rear
Housing: Aluminium
Sealing: IP 66 and IP67 mounted in console, with optional sealing kit (gasket and grease)
Toughened Safety Glass : Conturan (standard) Hardened, Laminated, Anti Glare Coated, all flush mounted
Ventilation: Through rear case

Mounting Style:

Surface (std)/ Bracket (Optional) Via 4 direct through chassis bolts/ Optional bracket mount with turntable (IEC 60945)
Panel Cut-Out Size (mm): (438) W x (385) H

Dimensions:

Display (mm): (470) W x (417) H x (70) D

Weight:

Weight (display only) : 10.9 kg
Weight (display with Bracket): 14 kg

Input Connectors:

RGB Signal: 15 Pin Female Connector
DVI Signal: DVI-D Female Connector
Composite Signal: RCA Female Jack
AC Power: IEC Inlet
DC Power: Screw Terminal

Menu Controls:

Via Front Mounted Buttons: Power, Brightness, Menu, Set, +, -, & Lock with dimmable backlight

Approvals / Warranty

Compliance: IEC 60945, IEC 60529 (IP), MIL-STD-810F, MIL-STD-901D (Hammer Test), IACS E10 (ABS, BV, CCS, GL,KR, LR, NK, RINA, RS)

*Approved by BSH, Other certificates where demand justifies

Limited Warranty: 2 Year

Ordering Codes

Standard Configuration:

19" Centric Display: 23-1910

Options:

Adjustable Universal Bracket (IEC 60945 approved with and without Turntable) 25-19US
Turntable for Bracket 25-19T
Sunshade 25-19SS

Shipping Details:

Carton Size (cm): TBD
Weight (kg): TBD

Nauticomp Inc.
8 Callaghan Road
Lindsay, Ontario,
Canada, K9V 4R4.
p: +1 705-328-2992
f: +1 705-328-2990

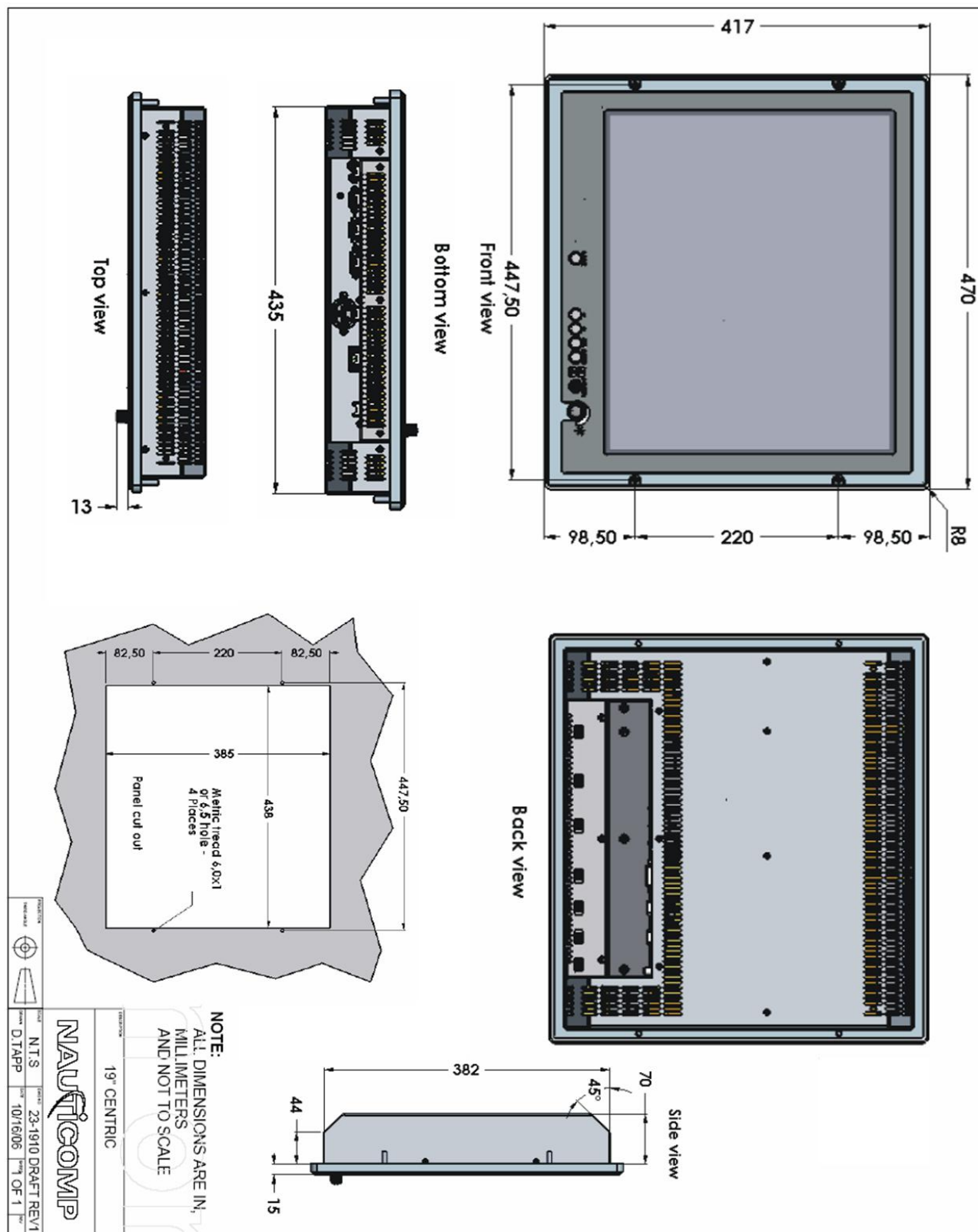
Nauticomp European Distribution
CA Clase
2 Mornington Place, Waterberry Drive,
Waterlooville, Hants, PO7 7XX
p: +44 2392 247920
f: +44 2392 261959

Nauticomp International
1200 NE 7th Avenue
Fort Lauderdale, Florida
United States 33304
p: +1 954-235-4875
f: +1 705-328-2990

URL: www.nauticomp.com E-Mail: sales@nauticomp.com

Due to a policy of continuous product development NAUTICOMP reserves the right to change specifications and descriptions without prior notification. All trade marks acknowledged.

Mechanical Specifications—Display



Nauticomp Inc.
8 Callaghan Road
Lindsay, Ontario,
Canada, K9V 4R4.
p: +1 705-328-2992
f: +1 705-328-2990

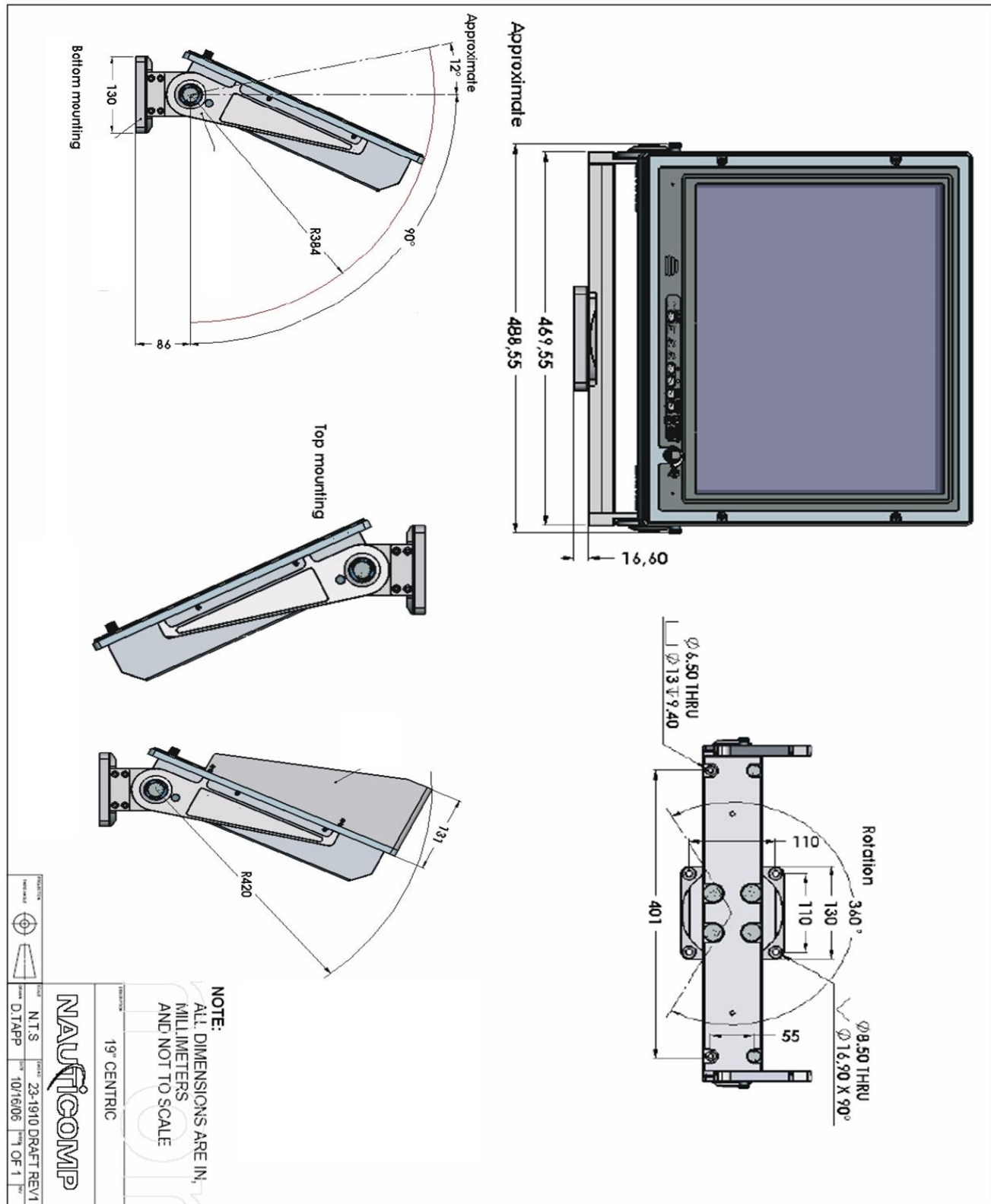
Nauticomp European Distribution
CA Clase
 2 Mornington Place, Waterberry Drive,
 Waterlooville, Hants, PO7 7XX
 p: +44 2392 247920
 f: +44 2392 261959

Nauticomp International
1200 NE 7th Avenue
Fort Lauderdale, Florida
United States 33304
p: +1 954-235-4875
f: +1 705-328-2990

URL: www.nauticomp.com E-Mail: sales@nauticomp.com

Due to a policy of continuous product development NAUTICOMP reserves the right to change specifications and descriptions without prior notification. All trade marks acknowledged.

Mechanical Specifications—Options



Nauticomp Inc.
8 Callaghan Road
Lindsay, Ontario,
Canada, K9V 4R4.
p: +1 705-328-2992
f: +1 705-328-2990

Nauticomp European Distribution
CA Clase
2 Mornington Place, Waterberry Drive,
Waterloo, Hants, PO7 7XX
p: +44 2392 247920
f: +44 2392 261959

Nauticomp International
1200 NE 7th Avenue
Fort Lauderdale, Florida
United States 33304
p: +1 954-235-4875
f: +1 705-328-2990

URL: www.nauticomp.com E-Mail: sales@nauticomp.com

Due to a policy of continuous product development NAUTICOMP reserves the right to change specifications and descriptions without prior notification. All trade marks acknowledged.