

SIGNATURE II

SERIES DISPLAYS



Dedicated marine displays

Newly updated with highly efficient, LED backlight technology, the Signature II Series line of displays combines all of today's cutting edge technology with ease of use. This completely re-vamped product includes our famous dim to red technology on all inputs. A slim case design so today's user can put a larger display into a more confined space, and a dial to control the increased dimming and brightness settings with ease while on the fly. A combination of 3 inputs 1 DVI, 1 VGA and 1 Composite on the 12", 15", and 19" models, continues to keep the Signature II Series at the top of the pack for its industry sector. 3 Year Limited Parts and Labour Warranty shows Nauticomp's continued commitment to service and product quality.

Nauticomp Inc.

8 Callaghan Road
Lindsay, Ontario
Canada K9V 4R4
p: +1.705.328.2992
f: +1.705.328.2990

*ISO 9001:2000
Certified Corporate Offices

Nauticomp International

3886 SW 30th Avenue
Fort Lauderdale, Florida
United States 33312
p: +1.954.235.4875
f: +1.705.328.2990

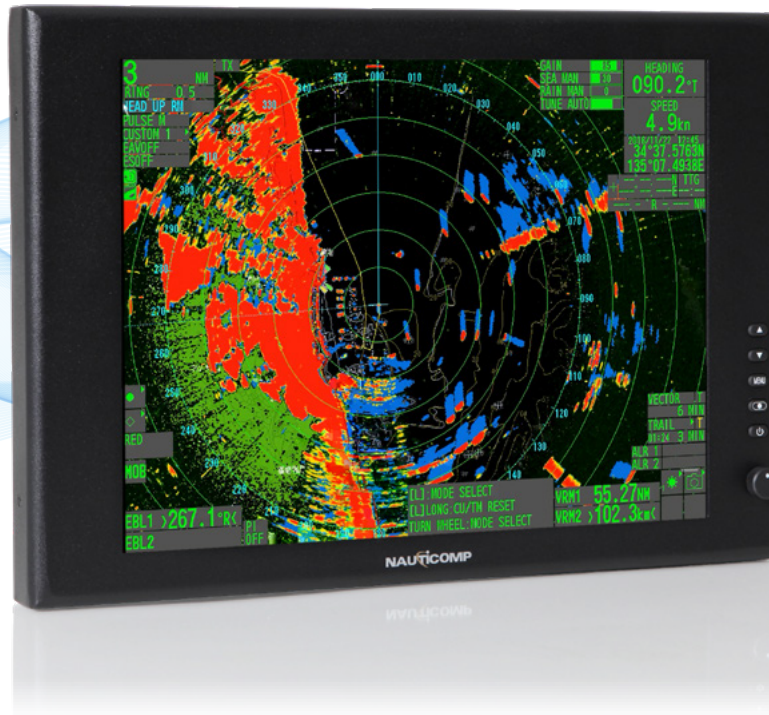
Nauticomp European Distribution

CA Clase, 2 Mornington Place,
Waterberry Drive Waterlooville, Hants,
PO7 7XX
Tel: +0845 2600 620
UK Fax: +0845 2600 621
Intl Tel: +44 2392 247920
Intl Fax: +44 2392 261959



SIGNATURE II

SERIES DISPLAYS



A complete line of displays designed around marine and military

Signature II Series displays provide an economical, rugged solution for both Marine and Military applications.

Product Features

- + Sunlight Readable - Ready for all environments
- + Waterproof - Built to Stringent IP 67 Standards
- + Bonded Glass - Optically Enhanced for clarity
- + Multiple Inputs - DVI, VGA, NTSC, PAL, SEC AM
- + Deep Dimming - 0 to 100% via "Potentiometer"
- + Superior Image - Scalable resolution up to SXGA
- + LED Backlighting - Reduces Power draw at all levels
- + Extended Temperature Range - on 12" and 15" Models
- + Picture in Picture - Designed to display ALL inputs

NAUTICOMP

nauticomp.com