

# NINA PENX Remote Processor

## System Specifications

### System Characteristics:

Processor:	Pentium Core 2 Duo E7500/2.93Ghz 3M, 1066 FSB
Operating System:	Windows XP Professional NTFS file system
Memory:	2 GB Non ECC 800 Mhz DDR2
Keyboard:	USB Keyboard
Video:	Integrated Video Intel GMA 4500
Hard Drive:	160 GB SATA 3.0 Gb/s
Mouse:	USB 2 button with scroll
Chassis:	RoHS Compliant Lead Free Chassis/Motherboard
Optical Drive:	8x DVD +/- RW
Sound:	Integrated AC97 Audio / Internal Speaker
Cable Adapter:	DVI to VGA Video Adapter
Documentation and Disks:	Resource CD Diagnostics and Drivers
Power Input:	12V/24V DC or 110 VAC @ 50/60 Hz 11 @ 12V DC draw
Ethernet:	RJ-45 Integrated network adapter
Serial Ports:	1 9 pin D-Sub
USB Ports:	5 USB 2.0
Audio Ports:	Microphone, Stereo in, Stereo out
Video Ports:	DVI-I with 15 pin VGA and DVI-D adapter
Parallel Ports:	1 25 Pin parallel port
Power Supply:	480w external

### Input Voltage:

DC Input: 12.0V DC Regulated

*Via external power supply - Refer to ordering codes...*

### Environmental:

*Operating Temp:	32 to +110°F
Storage Temp:	-4 to +140°F
Operating Humidity:	30% to 90% (Non-Condensing)
Storage Humidity:	10% to 90% (Non-Condensing)
Shock:	10g, 11msec 1/2 Sine Wave +/-1mm, 2 to 13Hz:0.7g 13 to 100Hz
Vibration:	100Hz

*\*We DO NOT recommend routine operation @ extreme temperatures.*

## Mechanical Description

### Construction:

Finish:	Black Fine Textured Semi Gloss Powder Coat
Housing:	Preformed Aluminium shock mounted
Ventilation:	Internal PC Fan cooling with Ventilated Case

### Mounting Style:

Surface:	8 bolt direct through chassis, horizontally or vertically, in- verted
----------	---

### Dimensions:

Processor:	11.11/16"W x 3.7/8"H x 10.3/16"D 296.86mm W x 98.43mm H x 258.76mm D
------------	--

### Weight:

Weight (kg): 12.15 lbs (5.12kg)

## Approvals / Warranty

**Compliance:** CL, UL, ULL, CSA, CE  
FCC Part 15 Section 15.109  
3 Year on-site

**Limited Warranty:** (serviced by Dell computer)

## Ordering Codes

### Configuration:

Nina Penx: 40-7778

*Please select external power supply from list below...*

### External Power Supply:

External 115/230V:	Standard
Optional External 12V DC:	00-0306 deletes standard 115/230
Optional External 24V DC:	00-0307 deletes standard 115/230

### Shipping:

Carton Size (cm):	21" (53) W x 20" (51) H x 10" (25) D
Weight (kg):	26.0 lbs (12)

Canadian  
Headquarters: **Nauticomp Inc.**  
8 Callaghan Road  
Lindsay, Ontario,  
Canada, K9V 4R4.  
p: +1 705-328-2992  
f: +1 705-328-2990

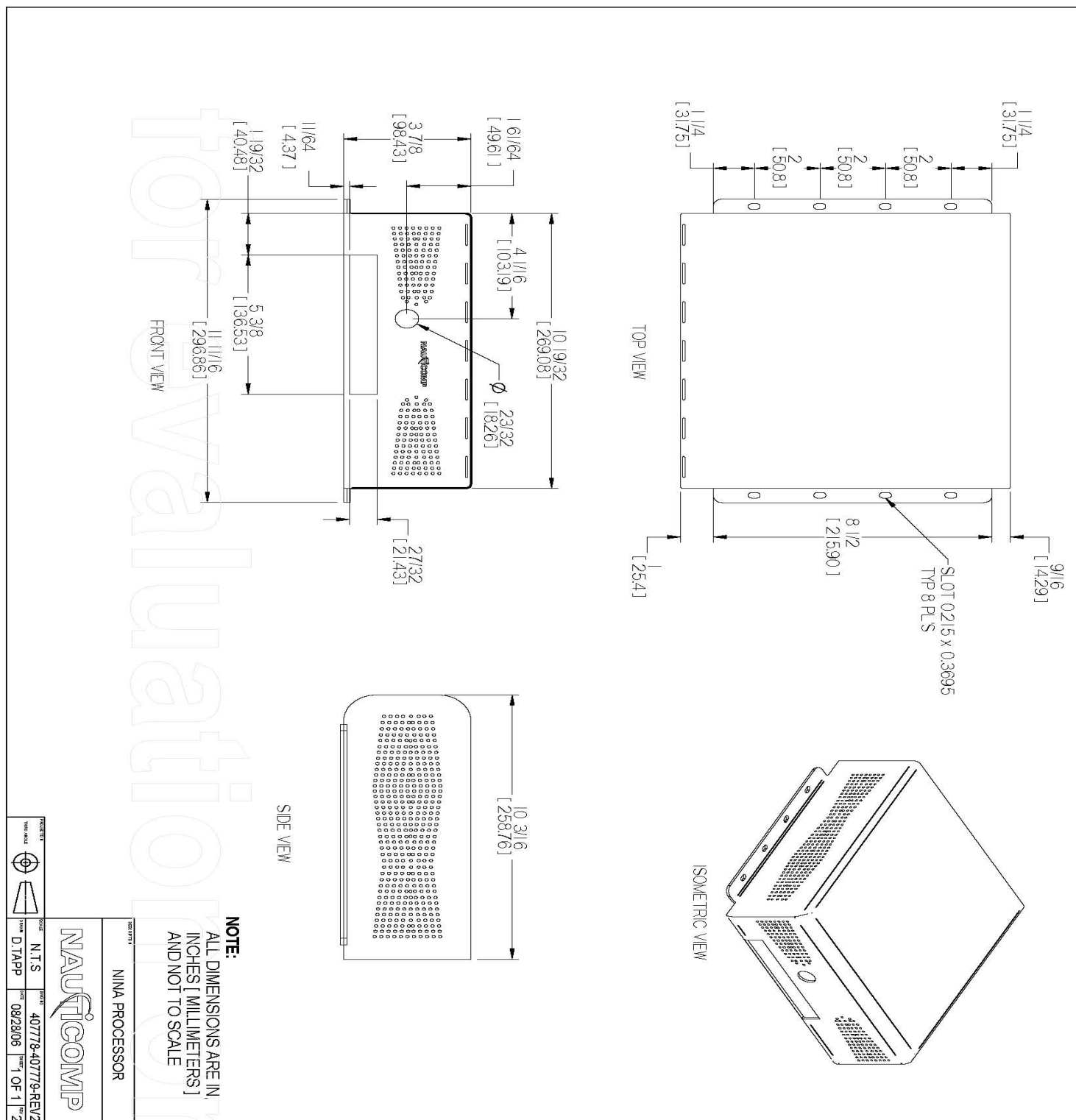
United Kingdom: **Nauticomp European Distribution**  
CA Clase  
2 Mornington Place, Waterberry Drive,  
Waterlooville, Hants, PO7 7XX  
p: +44 2392 247920  
f: +44 2392 261959

United States: **Nauticomp International**  
1200 NE 7th Avenue  
Fort Lauderdale, Florida  
United States 33304.  
p: +1 954 235 4875  
f: +1 705-328-2990

URL: [www.nauticomp.com](http://www.nauticomp.com) E-Mail: [sales@nauticomp.com](mailto:sales@nauticomp.com)

Due to a policy of continuous product development NAUTICOMP reserves the right to change specifications and descriptions without prior notification. All trade marks acknowledged.

# NINA PENX Remote Processor



Canadian  
Headquarters:

**Nauticomp Inc.**  
8 Callaghan Road  
Lindsay, Ontario,  
Canada, K9V 4R4.  
p: +1 705-328-2992  
f: +1 705-328-2990

United Kingdom:

**Nauticomp European Distribution**  
**CA Clase**  
**2 Mornington Place, Waterberry Drive,**  
**Waterlooville, Hants, PO7 7XX**  
**p: +44 2392 247920**  
**f: +44 2392 261959**

United States:

**Nauticomp International**  
1200 NE 7th Avenue  
Fort Lauderdale, Florida  
United States 33304.  
p: +1 954 235 4875  
f: +1 705-328-2990

**URL: [www.nauticomp.com](http://www.nauticomp.com) E-Mail: [sales@nauticomp.com](mailto:sales@nauticomp.com)**

Due to a policy of continuous product development NAUTICOMP reserves the right to change specifications and descriptions without prior notification. All trade marks acknowledged.