

# HD-SDI Display Installation Guide

## Part 1: Display Mounting

### Step 1

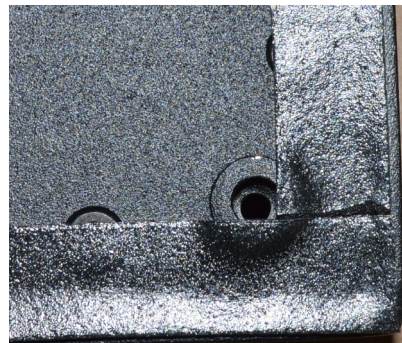
Cut properly sized hole to surface mount the display

### Step 2

Drill the 4 mounting holes in the correct location

### Step 3

Install 8-32 hardware. Maximum 1/2" into the display.



## Part 2: Connecting the Display to Power

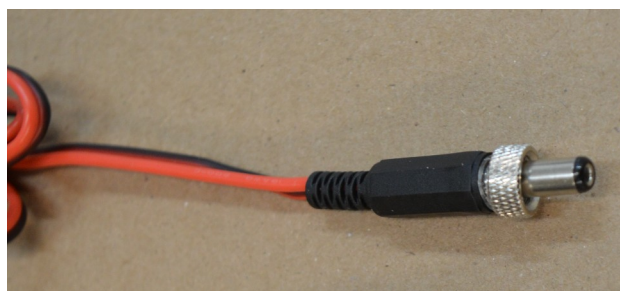
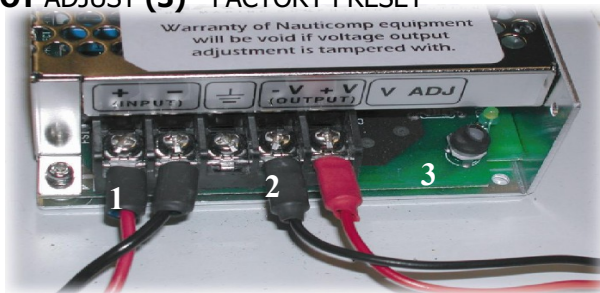
### Step 1

Connect input voltage wires **(1)** from vessels power supply (i.e. 12, 24, 36 VDC or 110 VAC as specified on order) to Nauticomp power supply. Connect **red** wire to positive input terminal and the **black** wire to negative input terminal. Tighten connectors securely.

### Step 2

Connect the wires **(2)** from the display to the power supply. Connect red wire to positive output terminal and the black wire to the negative output terminal. Tighten connectors securely.

**DO NOT ADJUST (3) - FACTORY PRESET**



## Part 3: Connecting Cables to the Display

POWER OUTPUT FROM THE PROVIDED NAUTICOMP POWER SUPPLY IS TO BE 12.1VDC. PLEASE DOUBLE CHECK BEFORE CONNECTING TO THE DISPLAY FOR THE FIRST TIME.

PLEASE NOTE: ALWAYS CONNECT ALL VIDEO INPUT CABLES BEFORE CONNECTING THE POWER

### Step 1

Press in HDMI and tighten thumb screw, VGA and tighten thumb screws, Twist lock the SDI in and out, twist lock the AV in, connect the audio in if speaker option is installed.

### Step 2

Gently pull all cables to insure that they are connected securely.

### Step 3

Press in 12v dc barrel connector. Tighten lock nut.



For Any assistance with the operation of your new HD-SDI Display, Please call us @ 705-328-2992

See reverse for Quick Reference Guide

**NAUTICOMP**