

17.0" Gen 3 Titan Commercial Grade LED Display

Electrical Description

Display Characteristics:

Type: 17.0" Active Matrix TFT
Dot Number: 1280 x 1024 Pixels
Dot Pitch: 0.264mm
Response Time: 8ms Average- Typical
Contrast Ratio: 1500:1 Typical
Brightness/Light Intensity: 500 cd/m² Daylight Readable
Viewing Angles (at CR>10): 85° Left/Right, 75° Up 85° Down
Backlight Life: 50,000 Hours- Typical
Colour Depth: 16.7 Million (Depending on Graphics Card)

Dimming Circuit:

Range: Full Brightness to Black

HDMI Input:

Digital Interface: HDMI 2.0 Compatible Interface
85Hz Operation

Analog RGB Input:

Analog Interface: 85 Hz Maximum Analog Bandwidth
0.5V to 1.0V Analog Input Range
Sync-on-Green (-ve) 0.3V

Synchronisation Range:

Horizontal Scan: 31.469-79.976 kHz*
Vertical Scan: 56-87 Hz*

**Depending on resolution*

Resolutions:

VESA Support for: 1280 x 1024 SXGA*
1024 x 768 XGA
800 x 600 SVGA
640 x 480 VGA

**Recommended for optimised resolution*

Active Display Area:

Active Display Area: 337.92 mm x 270.336mm

Input Voltage:

AC to DC Power Supply: 115VAC Input / 12VDC Output

Power Consumption:

4A (48W) @ 12VDC Max.

Environmental:

*Operating Temp: 32 to +131°F / 0 to +55°C
Storage Temp: -4 to +140°F / -20 to +61°C
Operating Humidity: 30% to 90% (Non-Condensing)
Storage Humidity: 10% to 90% (Non-Condensing)
Shock: 10g, 11msec ½ Sine Wave
Vibration: +/-1mm, 2 to 13Hz:0.7g 13 to 100Hz

**We DO NOT recommend routine operation @ extreme temperatures.*

Mechanical Description

Construction:

Finish: Black Fine Textured Semi Gloss
Powder Coat
Housing: Cold Rolled Steel with Anti
Corrosion Paint
Ventilation: Convection

Mounting Style:

Surface: Standard Surface mount with
optional Flush (embedded) Mount
Brackets, or RAM Pedestal Mount

Panel Cut-Out Size (mm): 14.80" (376) W X
12.12" (308) H

Dimensions:

Display (mm): 15.17" (386) W X
13.25" (336.5) H X
1.96" (50) D

Weight:

Weight (kg): 12 lbs (5.5)

Input Connectors:

1 x RGB Signal: 15 Pin Female D-Sub
2 x HDMI/DVI Signal: Female type A Connector w/thread
2 X Composite Input/Output: BNC Male- 2 x in, 2 x out
2 x Audio Input/Output: 3.5mm In/Out or L+R RCA In x 2
Power: Barrel Connector

Menu Controls:

Via Front Mounted Buttons: OSD Picture Features:
Size, Position, Colour and Input
Selection

Approvals / Warranty

Compliance (Pending): CE:IEC60945/ CISPR22 / EN
55022 FCC Part 15 Section 15.109

Limited Warranty: 2 Year

Ordering Codes

Configuration:

17.0" Titan Gen 3 Display: 29-1712
Please select external power supply from list below...

External Power Supply:

External 115VDC: Standard
External 12V DC: Optional
External 24V DC: Optional

Shipping:

Carton Size (cm): 18" (460) W x 18" (460) H x

Weight (kg): 14 lbs (16.5)

Canadian
Headquarters: **Nauticomp Inc.**
8 Callaghan Road
Lindsay, Ontario,
Canada, K9V 4R4.
p: +1 705-328-2992
f: +1 705-328-2990

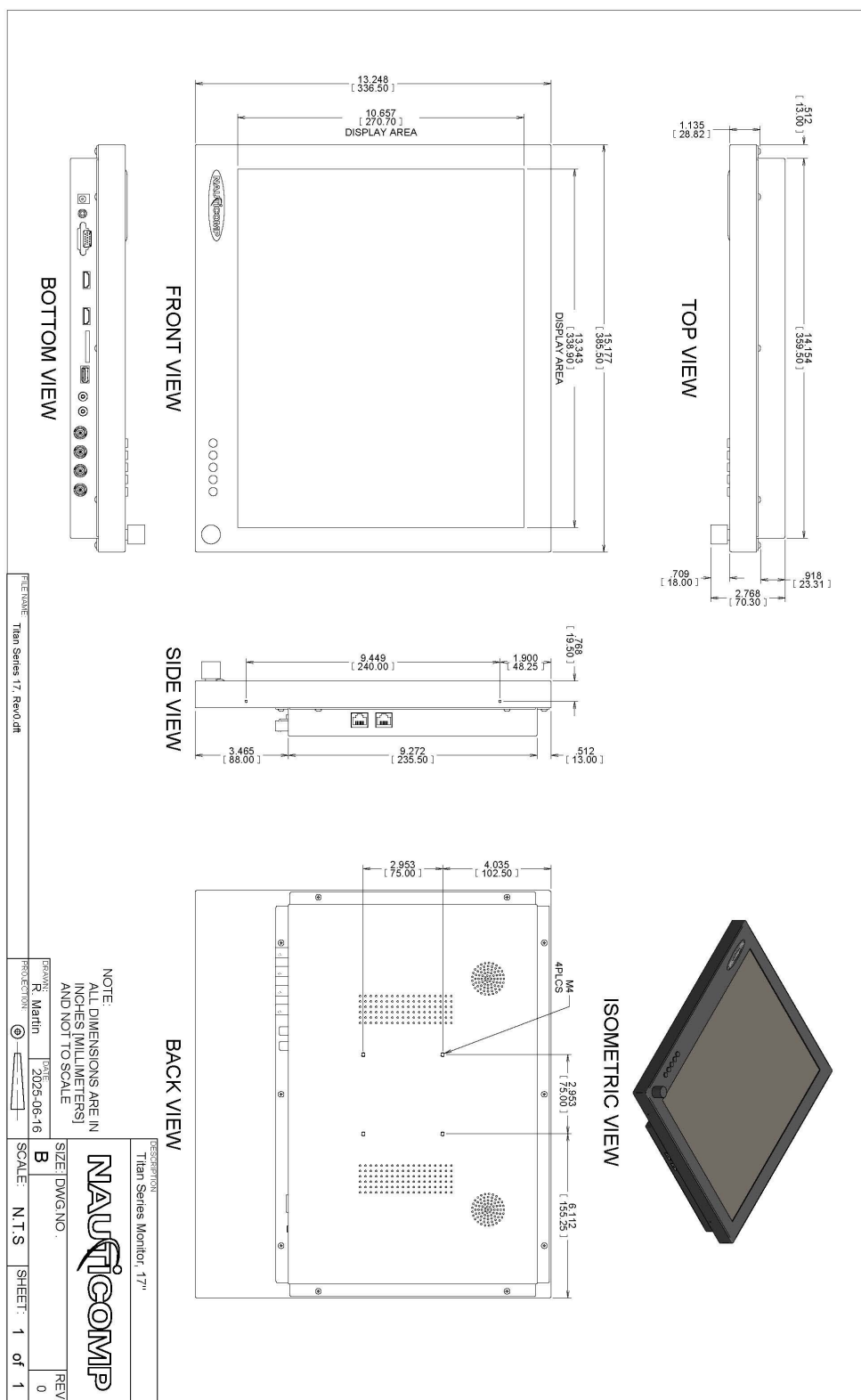
United Kingdom: **Nauticomp European Distribution**
Clase Connected
2 Mornington Place, Waterberry Drive,
Waterlooville, Hants, PO7 7XX
p: +44 2392 247920
f: +44 2392 261959

United States: **Nauticomp International**
1200 NE 7th Avenue
Fort Lauderdale, Florida
United States 33304.
p: +1 954 235 4875
f: +1 705-328-2990

URL: www.nauticomp.com E-Mail: sales@nauticomp.com

Due to a policy of continuous product development NAUTICOMP reserves the right to change specifications and descriptions without prior notification. All trade marks acknowledged.

17.0" Gen 3 Titan Commercial Grade LED Display



Canadian
Headquarters:

Nauticomp Inc.
8 Callaghan Road
Lindsay, Ontario,
Canada, K9V 4R4.
p: +1 705-328-2992
f: +1 705-328-2990

United Kingdom:

Nauticomp European Distribution
Clase Connected
2 Morrinton Place, Waterberry Drive,
Waterlooville, Hants, PO7 7XX
p: +44 2392 247920
f: +44 2392 261959

United States:

Nauticomp International
1200 NE 7th Avenue
Fort Lauderdale, Florida
United States 33304.
p: +1 954 235 4875
f: +1 705-328-2990

URL: www.nauticomp.com E-Mail: sales@nauticomp.com

Due to a policy of continuous product development NAUTICOMP reserves the right to change specifications and descriptions without prior notification. All trade marks acknowledged.