

24.0" Gen 3 Titan Commercial LED Display

Electrical Description

Display Characteristics:

Type: 23.6" 16:9 Active Matrix TFT
Dot Number: 1920 x 1080 Pixels
Dot Pitch: 0.283mm
Response Time: 5ms Average- Typical
Contrast Ratio: 3000:1 Typical
Brightness/Light Intensity: 500 cd/m² Daylight Readable
Viewing Angles (at CR>10): 170° Left/Right, 170° Up/ Down
Backlight Life: 50,000 Hours- Typical
Colour Depth: 16.7 Million (Depending on Graphics Card)

Dimming Circuit:

Range: Full Brightness to Black

HDMI Input:

Digital Interface: HDMI 2.0 Compatible Interface
85Hz Operation

Analog RGB Input:

Analog Interface: 85 Hz Maximum Analog Bandwidth
0.5V to 1.0V Analog Input Range

Composite Video Input/Output:

Composite Interface: 2 x PAL, NTSC—Full Screen Image
with quick toggle to VGA and DVI

Audio Input:

2 x built in alarm speakers: 2.5W

Synchronisation Range:

Horizontal Scan: 30-80 kHz*
Vertical Scan: 50-75 Hz*

**Depending on resolution*

Resolutions:

VESA Support for: 1920 X 1200
1920 X 1080*
1600 X 1050
1280 X 800 (+ many more)

**Recommended for optimised resolution*

Active Display Area:

Active Display Area: 518.16 mm x 322.58 mm

Input Voltage:

AC Power Supply: 90-240 VAC Input

Power Consumption:

<150W @ 110VAC, 60Hz

Environmental:

*Operating Temp: 32 to +131°F / 0 to +55°C
Storage Temp: -4 to +140°F / -20 to +61°C
Operating Humidity: 30% to 90% (Non-Condensing)
Storage Humidity: 10% to 90% (Non-Condensing)
Shock: 10g, 11msec ½ Sine Wave
Vibration: +/-1mm, 2 to 13Hz:0.7g 13 to 100Hz

**We DO NOT recommend routine operation @ extreme temperatures.*

Mechanical Description

Construction:

Finish: Black Fine Textured Semi Gloss
Powder Coat
Housing: Anodized Marine grade Steel with
Anti Corrosion Paint
Toughened Safety Glass: optional
Ventilation: Convection
Water Protection: IP56

Mounting Style:

Standard Surface mount— attach from rear

Surface Mount (mm): 17.50" (444.5) W x
12.99" (330) H

Dimensions:

21.76" (552.8) W X
Display (mm): 13.75" (349.2) H X
1.9" (48) D

Weight:

Weight (kg): 14 lbs (6.4)

Input Connectors:

1 x RGB Signal: 15 Pin Female D-Sub
2 x HDMI/DVI Signal: Female type A Connector w/thread
2 X Composite Input/Output: BNC Male— 2 x in, 2 x out
2 x Audio Input/Output: 3.5mm In/Out or L+R RCA In x 2
Power: Barrel Connector

Menu Controls:

Via Front Mounted Buttons: Multi-Language OSD Picture
Features: Size, Position, Colour and
Input Selection

Approvals / Warranty

Compliance (Pending): CE:IEC60945/ CISPR22 / EN
55022 FCC Part 15 Section 15.109

Limited Warranty: 2 Year

Ordering Codes

Configuration:

24" Titan Gen 3 29-2412

Please select external power supply from list below...

Optional Power Supply:

External 115/220 VAC: Standard
External 12V DC: Optional
External 24V DC: Optional

Shipping:

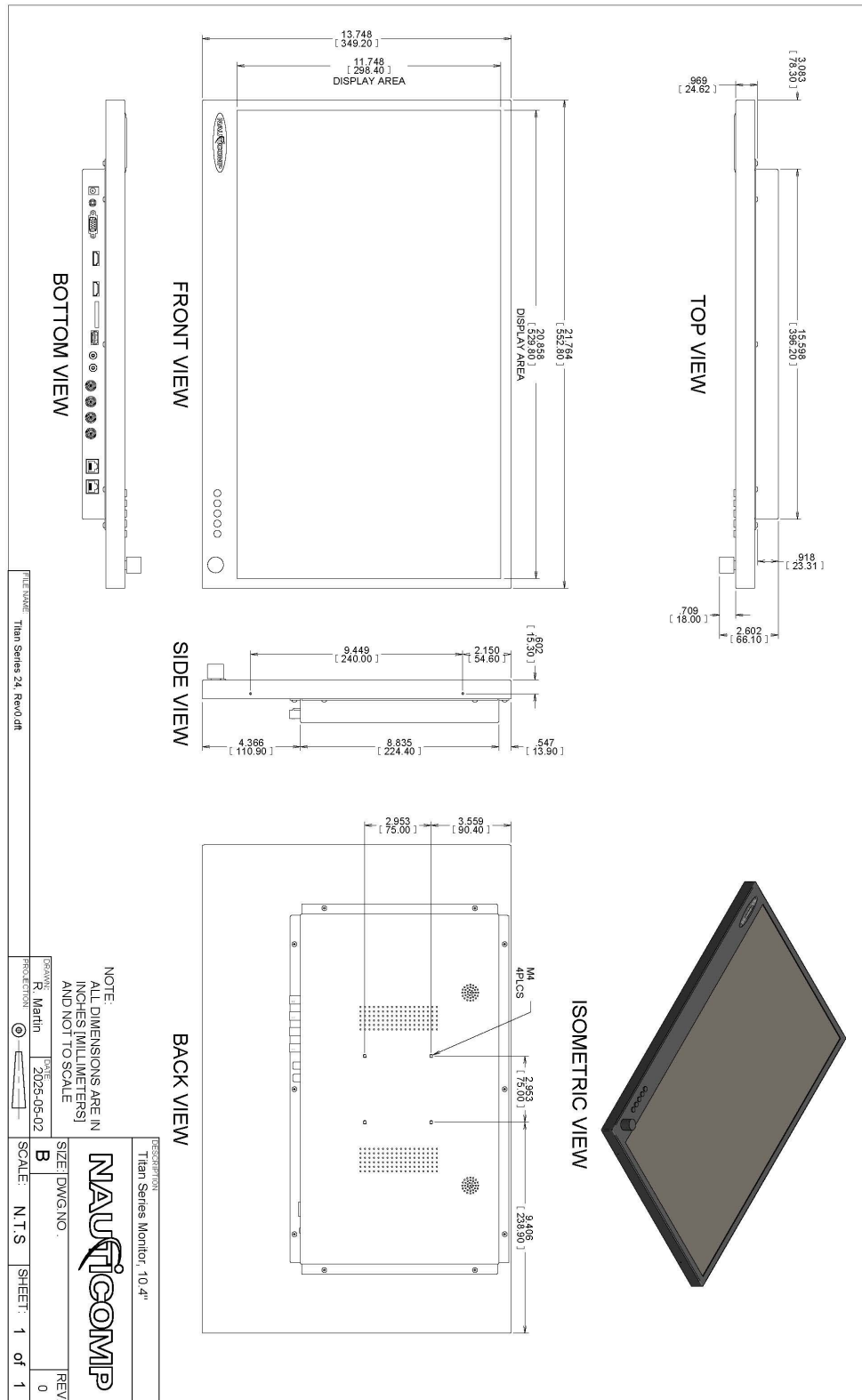
Carton Size (cm): 27.5" (698.5) W x 21" (533.4) H x
6" (152.4) D (w/No Options)
Weight (kg): 17.2 lbs (7.8)

Canadian
Headquarters: **Nauticomp Inc.**
8 Callaghan Road
Lindsay, Ontario,
Canada, K9V 4R4.
p: +1 705-328-2992
f: +1 705-328-2990

United Kingdom: **Nauticomp European Distribution**
Clase Connected
2 Mornington Place, Waterberry Drive,
Waterlooville, Hants, PO7 7XX
p: +44 2392 247920
f: +44 2392 261959

United States: **Nauticomp International**
1200 NE 7th Avenue
Fort Lauderdale, Florida
United States 33304.
p: +1 954 235 4875
f: +1 705-328-2990

24.0" Gen 3 Titan Commercial LED Display



Canadian Headquarters:
Nauticomp Inc.
8 Callaghan Road
Lindsay, Ontario,
Canada, K9V 4R4.
p: +1 705-328-2992
f: +1 705-328-2990

United Kingdom: **Nauticomp European Distribution**
Clase Connected
2 Mornington Place, Waterberry Drive,
Waterlooville, Hants, PO7 7XX
p: +44 2392 247920
f: +44 2392 261959

United States: **Nauticomp International**
1200 NE 7th Avenue
Fort Lauderdale, Florida
United States 33304.
p: +1 954 235 4875
f: +1 705-328-2990