

11.6" HD-SDI Display

Electrical Description

Display Characteristics:

Type: 11.6" Active Matrix TFT
 Dot Number: 1920 x 1080 Pixels
 Dot Pitch: 0.1989mm
 Response Time: 40ms Average- Typical
 Contrast Ratio: 600:1 Typical
 Brightness/Light Intensity: 1100 cd/m² (Enhanced for Sunlight Readability)
 Viewing Angles (at CR>10): 80° Left/Right, 60/80° Up/ Down
 Backlight Life: 50,000 Hours- Typical
 Colour Depth: 16.7 Million (Depending on Graphics Card)

Dimming Circuit:

Range: Full Brightness to Black

HDMI Input:

Digital Interface: DVI 1.0 Compatible Interface
 85Hz Operation

Analog RGB Input:

Analog Interface: 85 Hz Maximum Analog Bandwidth
 0.5V to 1.0V Analog Input Range
 Sync-on-Green (-ve) 0.3V

HD-SDI Input/Output:

HD-SDI Interface: Fully compliant with SMPTE 259M-C and SMPTE 292M standards

Resolutions:

HD-SDI	DVI/VGA	
NTSC / 480i60 (525i60)	1920 x 1200	1280x800
PAL / 576i50 (625i50)	1920 x 1080*	1280x768
480p60 (525 p60)	1680 x 1050	1024x768
576p50 (625 p50)	1600x1200 1600x900	1024x600
(HDTV) 720p 50	1440x900 1366x768	800x600
(HDTV) 720p 60	1280x1024	800x480
(HDTV) 1080i 50		640x480
(HDTV) 1080i 60*		
(HDTV) 1080p 25		
(HDTV) 1080p 30		

**Recommended for optimised resolution*

Active Display Area:

Active Display Area: 298.45 mm x 144.15 mm

Input Voltage:

DC Input: 9-30VDC input

Power Consumption:

5.0 A (60 W) Max @ 12VDC

Environmental:

*Operating Temp: -4 to +158°F / -20 to +70°C
 Storage Temp: -22 to +176°F / -30 to +80 °C
 Operating Humidity: 5% to 95% (Non-Condensing)
 Storage Humidity: 5% to 95% (Non-Condensing)
 Shock: 10g, 11msec ½ Sine Wave
 Vibration: +/-1mm, 2 to 13Hz:0.7g 13 to 100Hz

**We DO NOT recommend routine operation @ extreme temperatures.*

Mechanical Description

Construction:

Finish: Black Fine Textured Semi Gloss Powder Coat
 Housing: Preformed Aluminium
 Sealing: IP56
 Toughened Safety Glass : Bonded, Contrast Enhancing, Optically Coated and Polarized
 Ventilation: Convection

Mounting Style:

Surface (mm): Surface Mounted w/1.275" (32.39) Protruding and Fastened with 4 Mounting Studs

Panel Cut-Out Size (mm): 10.35" (262.89) W X 6.50" (165.1) H

Pedestal Mounting: VESA 100mm

Dimensions:

11.75" (298.45) W x
 Display (mm): 8.5" (215.9) H x 3.151" (80.02) D

Weight:

Weight (kg): 6 lbs (2.7)

Input Connectors:

RGB Signal: 15 pin DB-15 (female)
 Digital/DVI Signal: HDMI (female)
 HD-SDI In/Out: Male BNC (EDID)
 Power: 2-pin circular connector

Menu Controls:

Via Front Mounted Buttons: OSD Picture Features: Size, Position, Colour and Input Selection

Approvals / Warranty

Compliance (Pending): CE:IEC60945/ CISPR22 / EN 55022 FCC Part 15 Section 15.109

Limited Warranty: 2 Year

Ordering Codes

Configuration:

11.6" HD-SDI Display: 27-1210

Shipping:

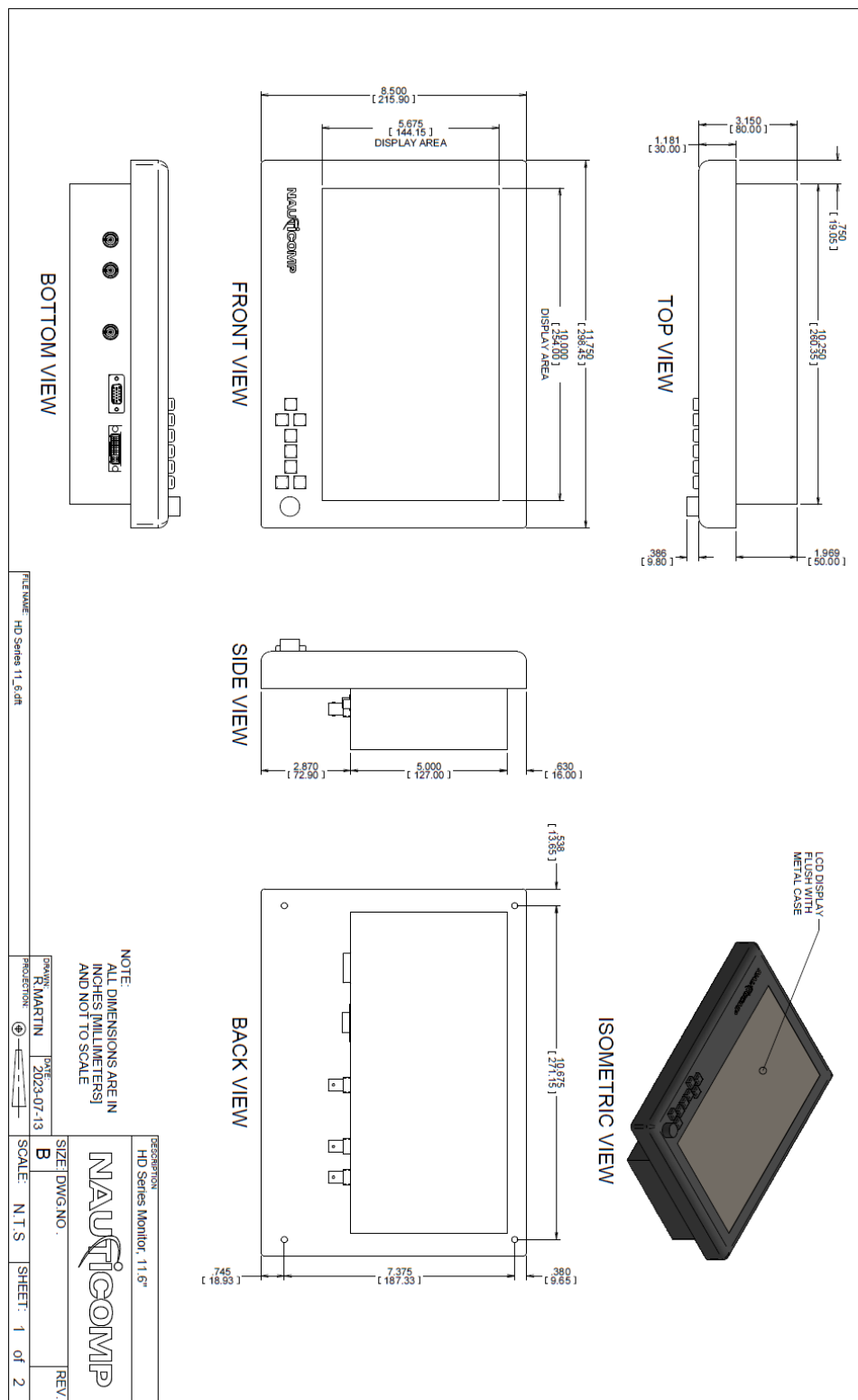
Carton Size (cm): 20" (51) W x 17" (43) H x 8" (20) D
 Weight (kg): 16 lbs (7)

Canadian Headquarters: **Nauticomp Inc.**
 8 Callaghan Road
 Lindsay, Ontario,
 Canada, K9V 4R4.
 p: +1 705-328-2992
 f: +1 705-328-2990

United Kingdom: **Nauticomp Europe Limited**
 Barham Court,
 Teston, Maidstone, Kent
 ME18 5BZ, United Kingdom
 p: +44 (0) 1622 618707
 f: +44 (0) 1622 735469

United States: **Nauticomp International**
 3886 SW 30th Avenue
 Fort Lauderdale, Florida
 United States 33312.
 p: +1 954 235 4875
 f: +1 705-328-2990

11.6" HD-SDI Display

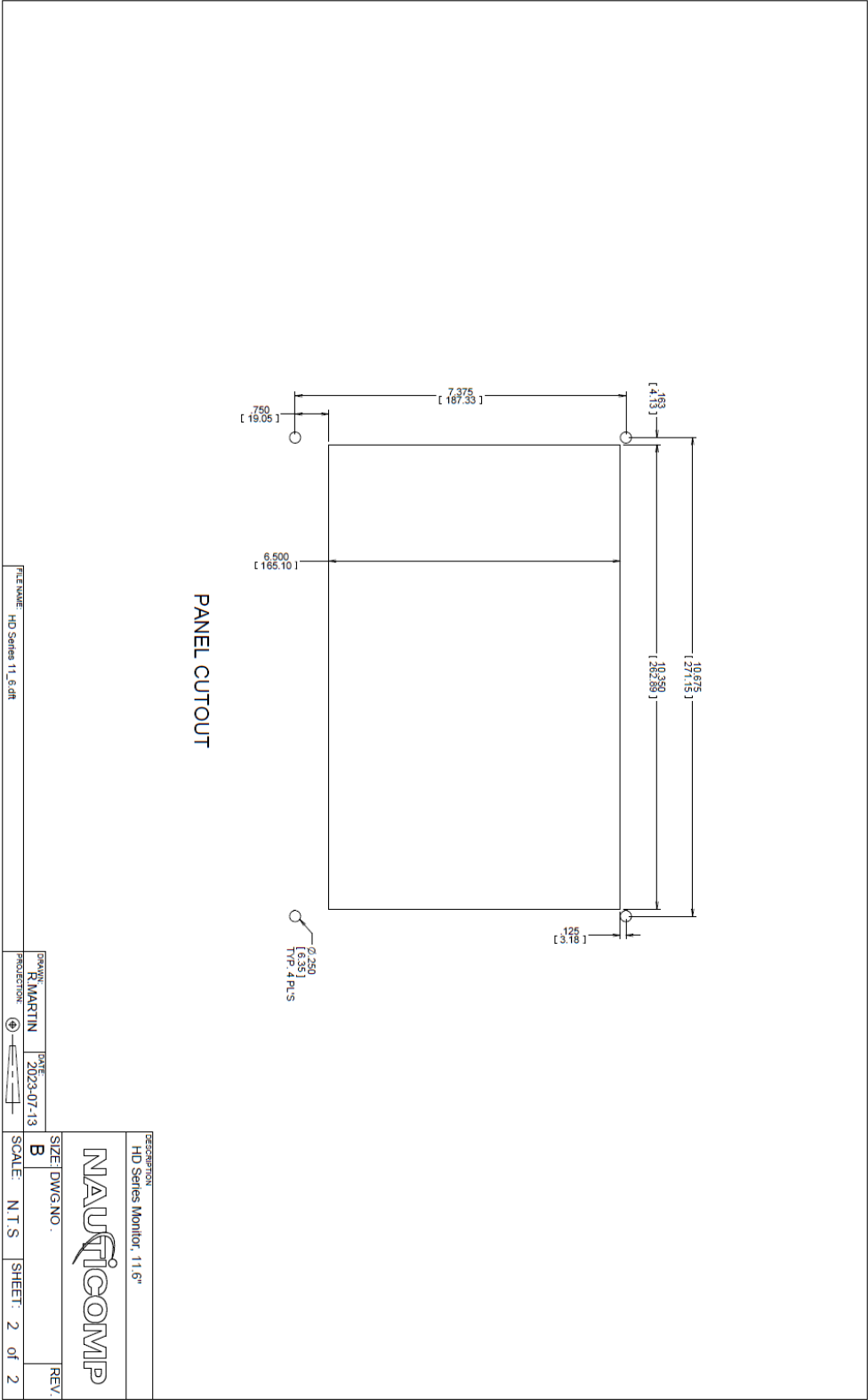


Canadian Headquarters:
Nauticomp Inc.
 8 Callaghan Road
 Lindsay, Ontario,
 Canada, K9V 4R4.
 p: +1 705-328-2992
 f: +1 705-328-2990

United Kingdom:
Nauticomp Europe Limited
 Barham Court,
 Teston, Maidstone, Kent
 ME18 5BZ, United Kingdom
 p: +44 (0) 1622 618707
 f: +44 (0) 1622 735469

United States:
Nauticomp International
 3886 SW 30th Avenue
 Fort Lauderdale, Florida
 United States 33312.
 p: +1 954 235 4875
 f: +1 705-328-2990

11.6" HD-SDI Display



Canadian Headquarters:
Nauticomp Inc.
 8 Callaghan Road
 Lindsay, Ontario,
 Canada, K9V 4R4.
 p: +1 705-328-2992
 f: +1 705-328-2990

United Kingdom: **Nauticomp Europe Limited**
 Barham Court,
 Teston, Maidstone, Kent
 ME18 5BZ, United Kingdom
 p: +44 (0) 1622 618707
 f: +44 (0) 1622 735469

United States: **Nauticomp International**
 3886 SW 30th Avenue
 Fort Lauderdale, Florida
 United States 33312.
 p: +1 954 235 4875
 f: +1 705-328-2990